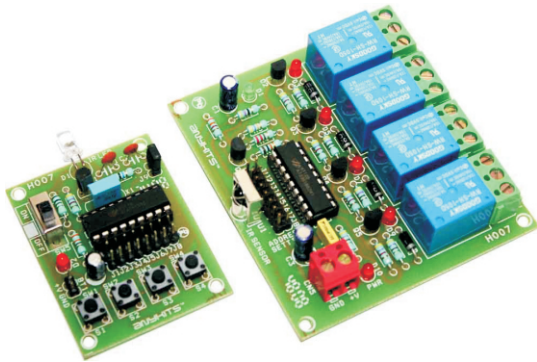


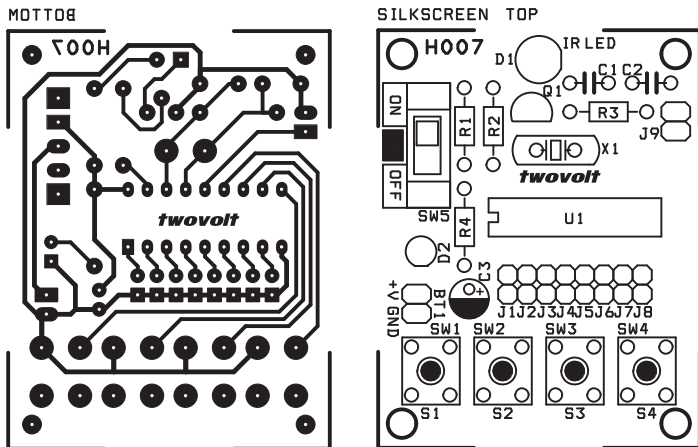
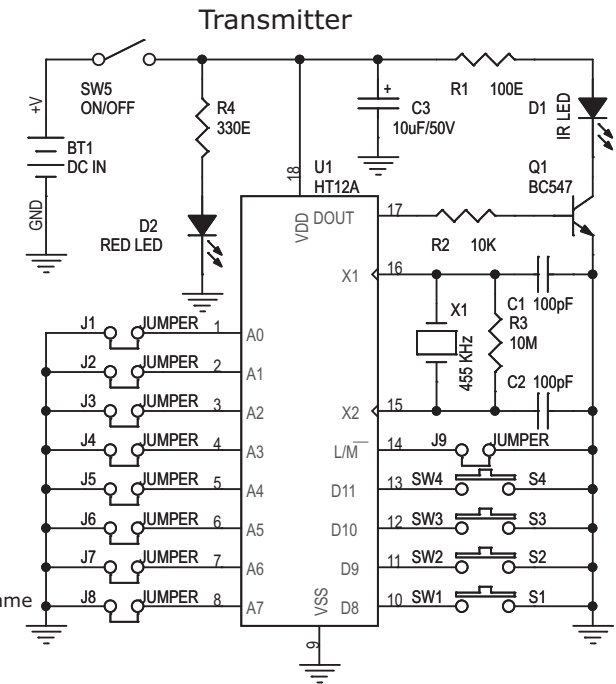
4 CHANNEL INFRARED REMOTE MODULE

4 Channel Infrared (IR) Remote controller is using HT12A and HT12D encoder / decoder chips from Holtek.

- Supply - Transmitter : 3 to 5 VDC, 5 V @ 20 mA & Receiver : 5 VDC @ 200 mA
- Output : 4 channel Latch or Momentary on board Jumper for selection
- Crystal based oscillator for reliability of operation
- Jumper selectable 8 bit address code
- LED output to indicate reception
- On/Off slide switch in the transmitter
- Power-On LED indicator in the Receiver / Transmitter
- Valid transmission indicator
- 4 LED for Relay On/Off status
- Four mounting holes of 3.2 mm each
- PCB dimensions - Transmitter : 43 mm x 56 mm & Receiver : 80 mm x 73 mm



BT1 : Battery Supply 5 VDC
 J9 : Open - Latch, J9 : Close - Momentary
 J1 TO J8 : For transmitter and receiver address setting should be same

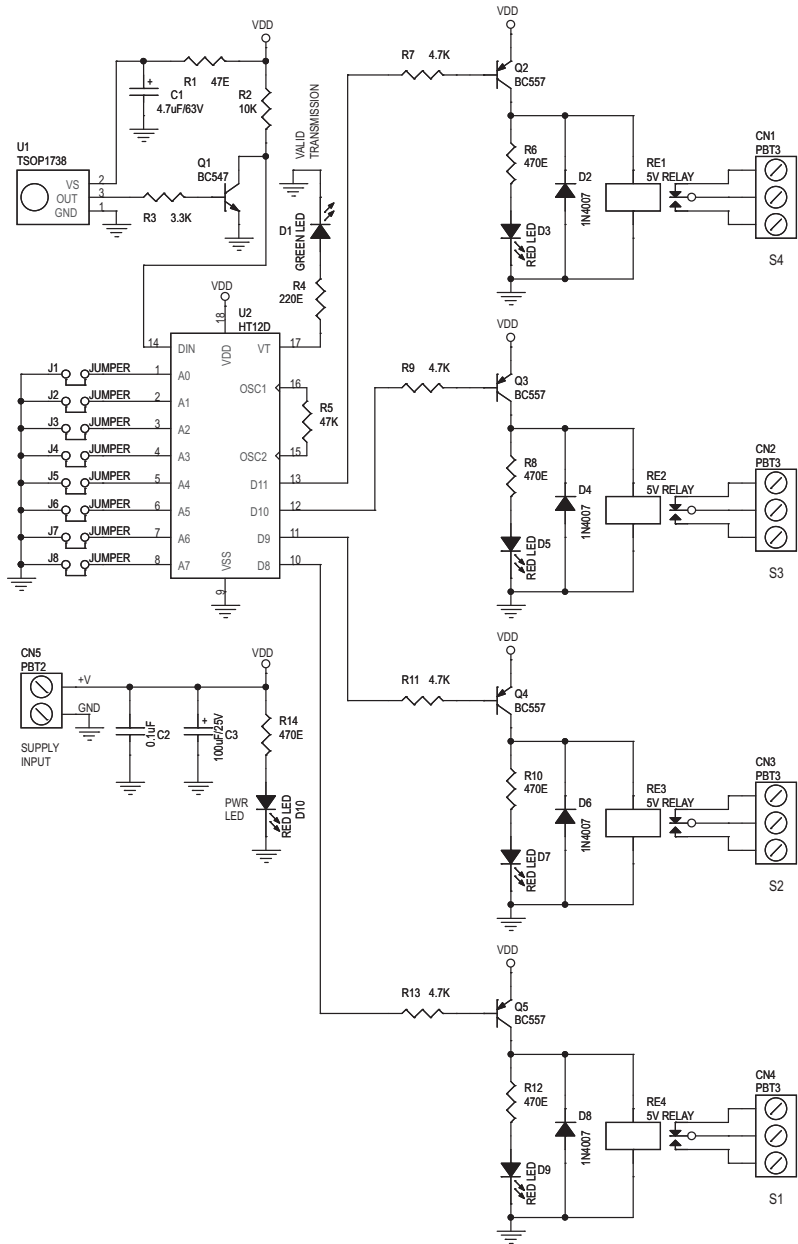


SR.	QTY.	REF.	DESCRIPTION
1	4	CN1,CN2,CN3,CN4	3 PIN TERMINAL CONNECTOR
2	1	CN5	2 PIN TERMINAL CONNECTOR
3	1	C1	4.7uF/63V
4	1	C2	0.1uF
5	1	C3	100uF/25V
6	1	D1	GREEN LED 3MM
7	4	D2,D4,D6,D8	1N4007
8	5	D3,D5,D7,D9,D10	RED LED 3MM
9	8	J1,J2,J3,J4,J5,J6,J7,J8	2 PIN JUMPER WITH CLOSER
10	1	Q1	BC547
11	4	Q2,Q3,Q4,Q5	BC557
12	4	RE1,RE2,RE3,RE4	5V RELAY
13	1	R1	47E
14	1	R2	10K
15	1	R3	3.3K
16	1	R4	220E
17	1	R5	47K
18	5	R6,R8,R10,R12,R14	470E
19	4	R7,R9,R11,R13	4.7K
20	1	U1	TSOP1738
21	1	U2	HT12D
22	1	SOCKET	18 PIN DIP IC SOCKET

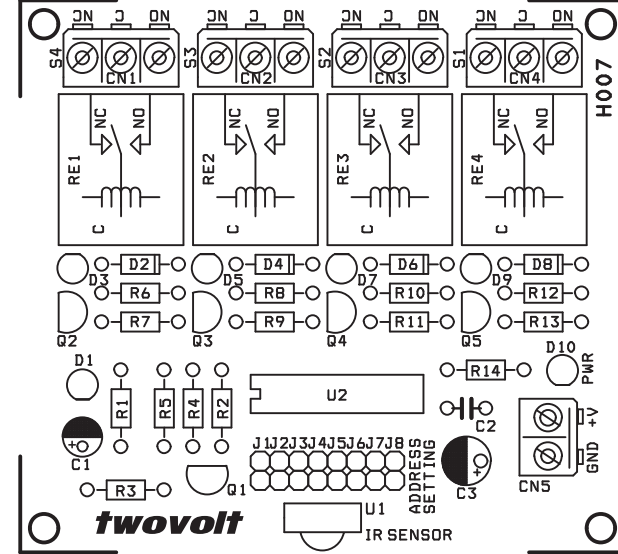
SR.	QTY.	REF.	DESCRIPTION
1	1	BT1	2 PIN BERG CONNECTOR
2	2	C1,C2	100pF
3	1	C3	10uF/50V OR 63V
4	1	D1	IR LED
5	1	D2	3 MM RED LED
6	8	J1,J2,J3,J4,J5,J6,J7,J8	2 PIN JUMPER WITH CLOSER
7	1	J9	2 PIN JUMPER WITH CLOSER
8	1	Q1	BC547
9	1	R1	100E
10	1	R2	10K
11	1	R3	10M
12	1	R4	330E
13	4	SW1,SW2,SW3,SW4	TACT SWITCH
14	1	SW5	SLIDE SWITCH
15	1	U1	HT12A
16	1	X1	455 KHz RESONATOR
17	1	SOCKET	18 PIN DIP IC SOCKET



Receiver



SILKSCREEN TOP



MOTTOB

