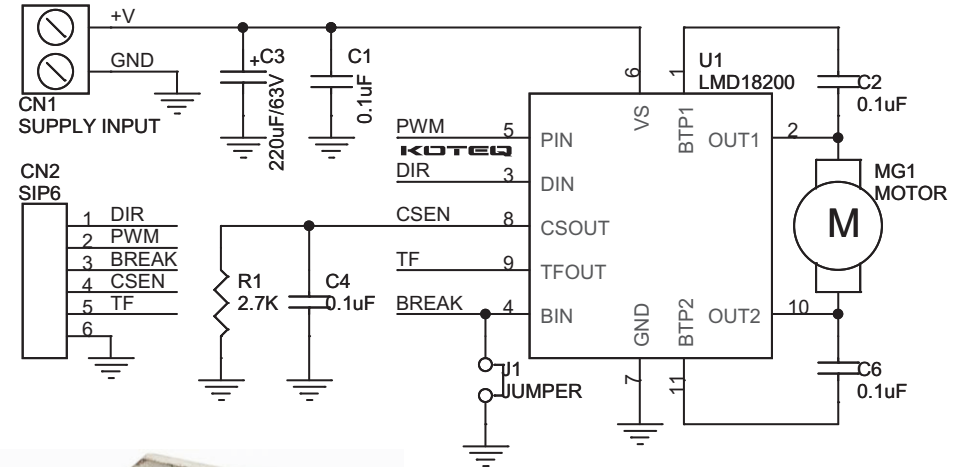


## LMD18200(H-Bridge) DC Motor Driver 3A

LMD18200 based project is ideal solution for motion control and robotics applications.

### Features

- Powerful bi-directional DC Motor driver
- Screw-terminals for Power Supply and Motor Connections
- 6-pin Header connector for PWM, direction, current sense, Brake
- Delivers Up to 3A Continuous Output (Peak 6Amps)
- Operates at Supply Voltages Up to 55V
- Low RDS(ON) Typically 0.33Ω per Switch at 3A
- TTL and CMOS Compatible Inputs
- No “Shoot-Through” Current
- Thermal Warning Flag Output at 145°C
- Thermal Shutdown (Outputs Off) at 170°C
- Internal Clamp Diodes
- Shorted Load Protection
- Internal Charge Pump with External Bootstrap Capability
- Mounting holes of 2.6 mm each
- PCB dimensions 44 mm x 25 mm
- Note : Large Size Heat-Sink is must for full load 3amps.

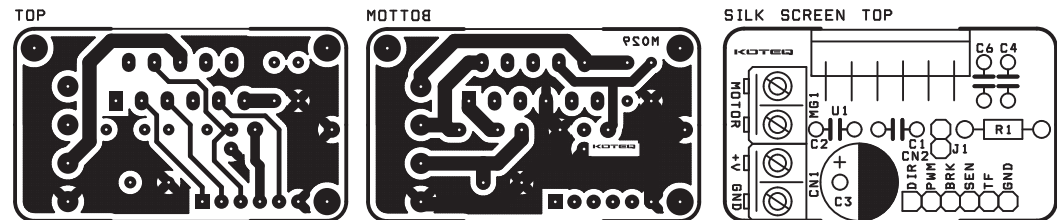


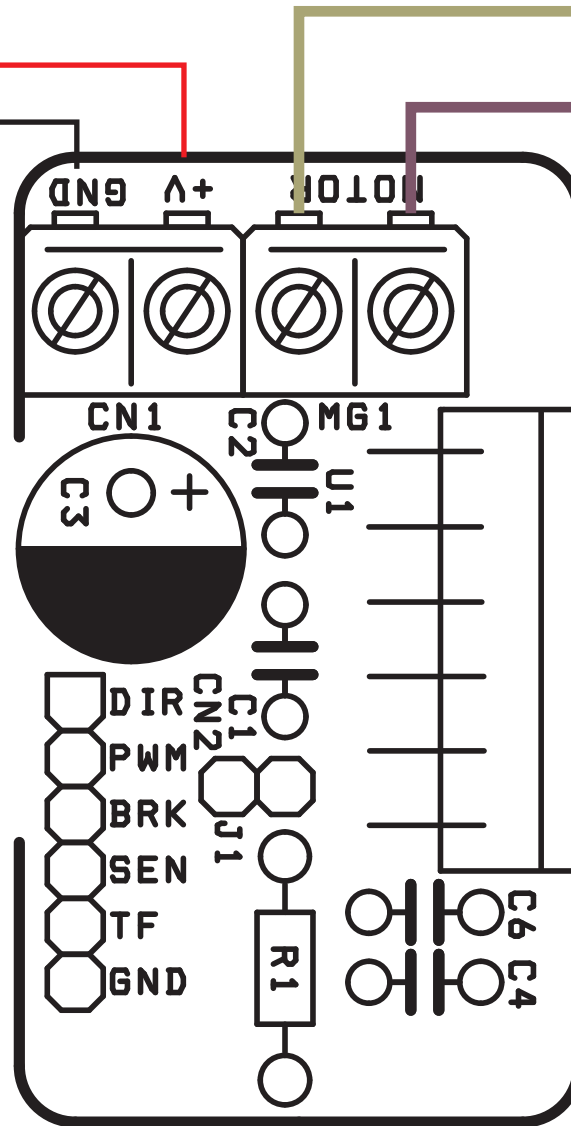
CN2 Connector Pinout Configuration :

- Pin No. 1 : DIR, Direction Input
- Pin No. 2 : PWM, Pulse Width Modulation Input
- Pin No. 3 : BRK, BrakeInput (Running Motor Stop if Logic is High)
- Pin No. 4 : SEN, Current Sense Output
- Pin No. 5 : TF, Thermal Flage Output
- Pin No. 6 : GND, Ground

CN1 Connector : Motor Supply Input max 50 VDC  
 MG1 Connector : DC Motor max Load 50 V, 3 A  
 J1 : Close Releases the Brake, Open apply Brake

SR.	QTY.	REF.	DESCRIPTION
1	1	CN1	2 PIN SCREW TERMINAL CONNECTOR
2	1	CN2	6 PIN BERG CONNECTOR
3	4	C1,C2,C4,C6	0.1uF
4	1	C3	220uF/63V
5	1	J1	2 PIN JUMPER WITH CLOSER
6	1	MG1	2 PIN SCREW TERMINAL CONNECTOR
7	1	R1	2.7K
8	1	U1	LMD18200





- DIRECTION
- PWM
- BRAKE
- CURRENT SENS
- TF
- GND

