

Dual DC Motor Driver For Robot (L298)

Features

- Motor supply: 12 to 46 VDC
- Open J-5V Jumper if Input Motor Supply is above 18V (Required External 5V for Logic)
- Control Logic Input: Standard TTL logic level
- Output DC drive to motor: up to 2 A each (Peak)
- On Board 5V Regulator (Close J-5V to Use On Board 5V Regulator)
- Enable and direction control pins available
- External Diode Bridge for protection
- Heat-sink for IC
- Power-On LED indicator
- Header Connector for Inputs and PWM
- On Board PCB Solderable Jumpers for Enable
- Screw terminal connector for easy input supply (PWR) / output (Motor) connection
- Four mounting holes of 3.2 mm each
- PCB dimensions 41X40mm

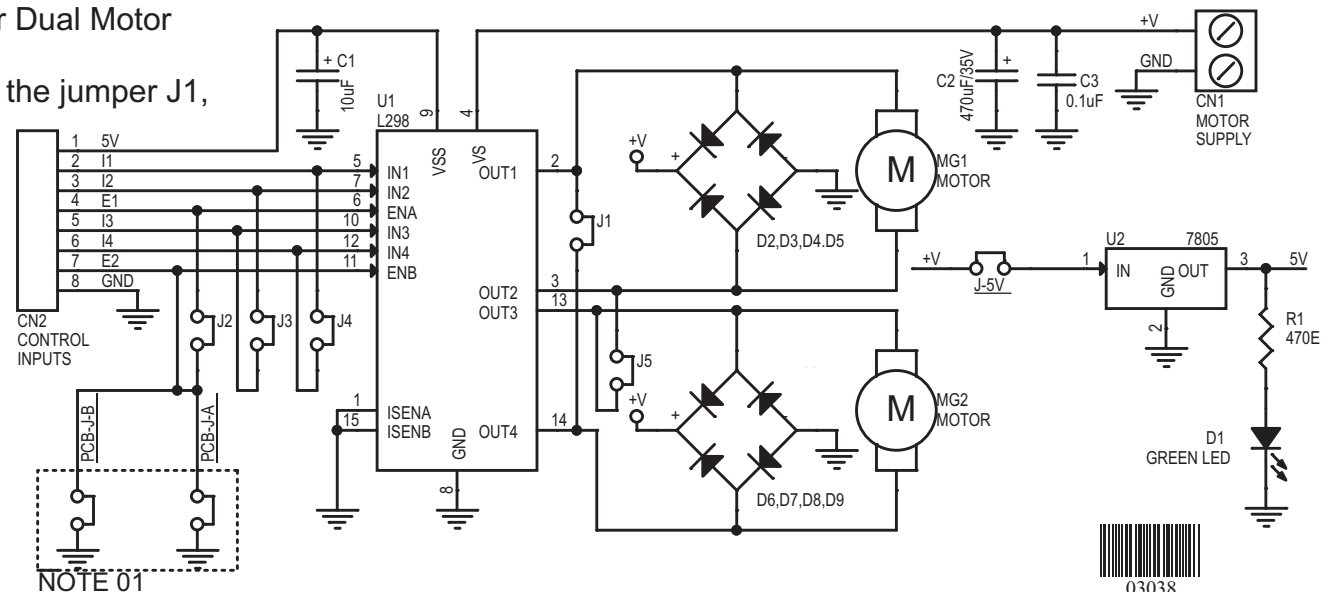
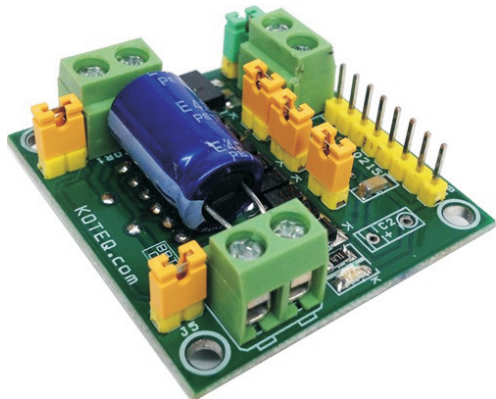
Dual Motor L298 H-Bridge Control project can control two DC motors connected to it. The circuit is designed around popular dual H-Bridge L298 from ST. This board can be configured to drive a single motor with high current rating also. This can be achieved with the help of jumpers on the board. An onboard 5V regulator can take a maximum of 18V of DC input. Should you wish to drive this board with higher voltage then 18V, you will need to connect a external 5V regulated source to the logic circuit. For this you will need to remove J-5V. This board can fit in any small toy or robot due to small size and very low profile. L298 IC is mounted under the PCB in horizontal position to make board small and low profile to fit any small robot. On board 5V regulator can be used to power up external Micro-Controller board as well as internal logic supply.

Note 01: Solder the Jumper PCB-J-A and PCB-J-B to enable the board permanently,

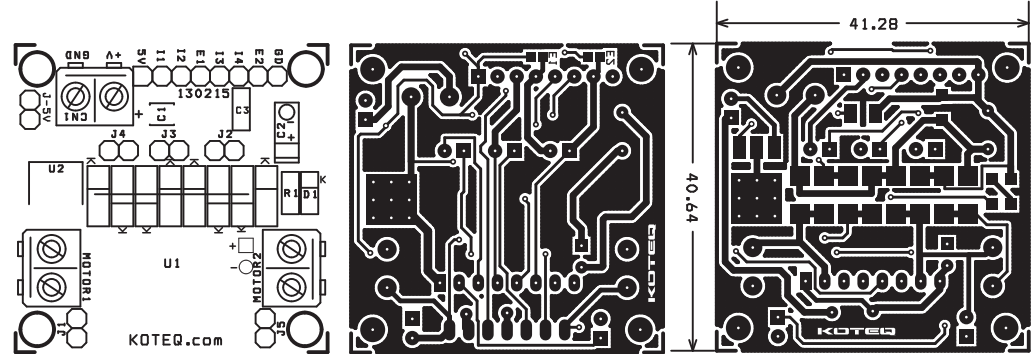
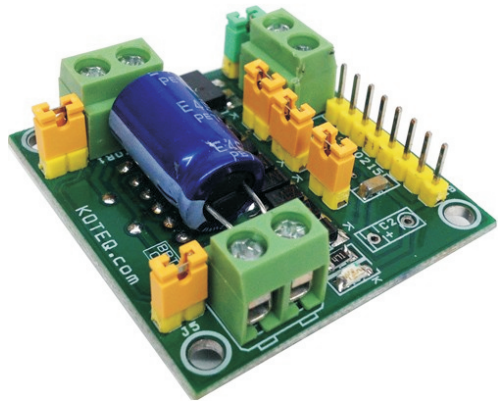
Jumpers are located under the PCB

Note 02: Open Jumper J1, J2, J3, J4, J5 for Dual Motor Operations

Note 03: For Single motor operation closed the jumper J1, J2, J3, J4, J5



Dual DC Motor Driver For Robot (L298)



BOM			
1	8	D2,D3,D4,D5,D6,D7,D8.D9	MBRS140T3G SMD DO14
2	1	CN1	2 PIN SCREW TERMINAL
3	1	CN2	7 PIN HEADER MALE
4	1	C1	10uF / 16V SMD 1210
5	1	C2	470uF/35V
6	1	C3	0.1uF SMD 0805
7	1	D1	GREEN LED SMD 0805
8	6	J1,J2,J3,J4,J5,J-5V	JUMPER WITH CLOSER
9	2	MG1,MG2	2 PIN SCREW TERMINAL
10	1	R1	470E SMD 0805
11	1	U1	L298 H-Bridge
12	1	U2	7805 5V REGULATOR SMD DPAK

