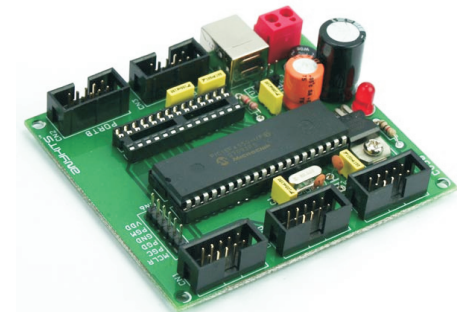
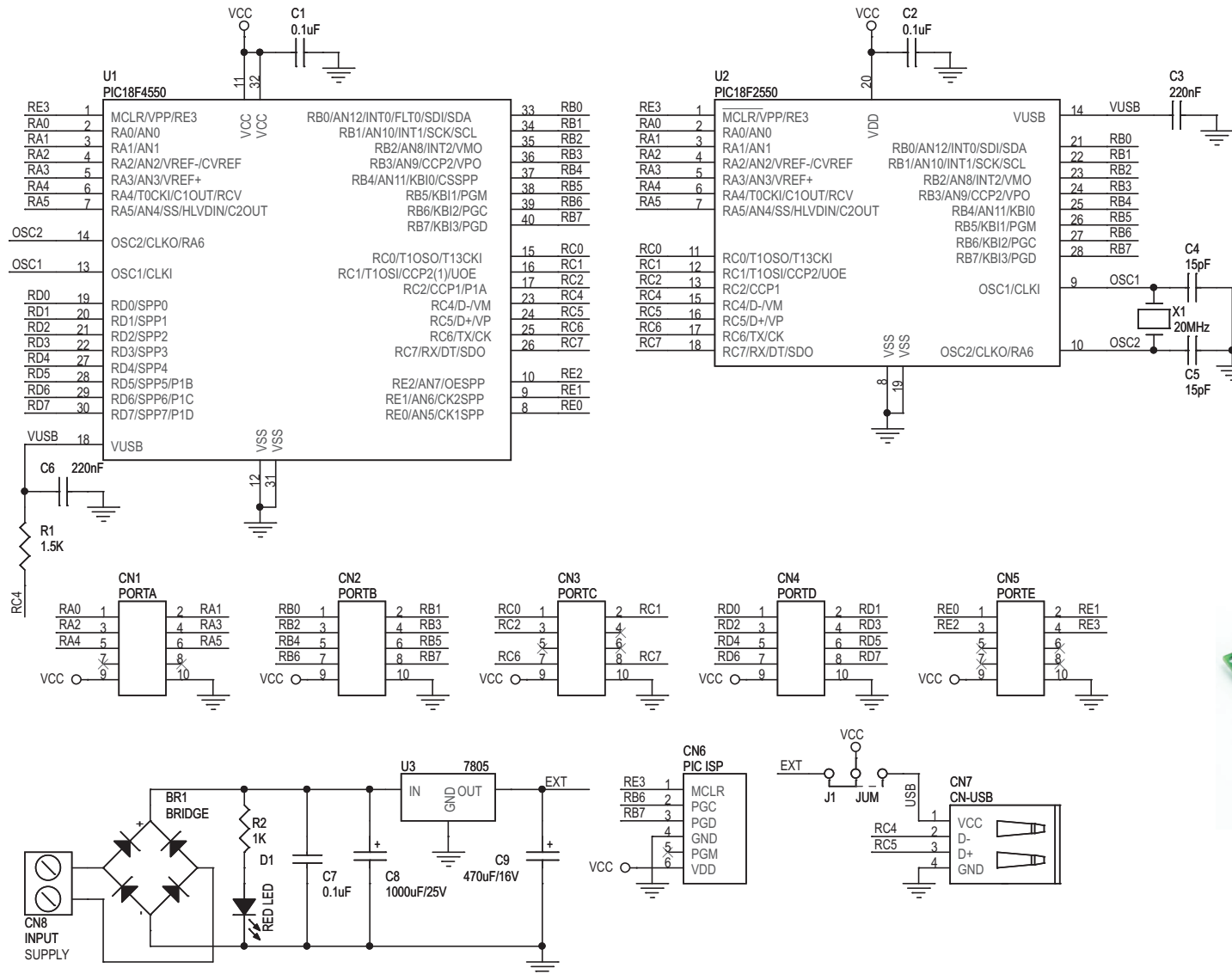


PIC18F USB DEVELOPMENT BOARD

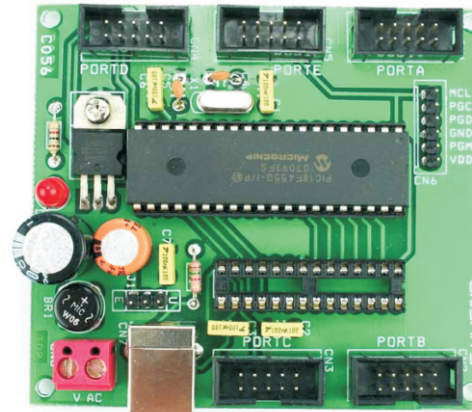
PIC18F USB Development Board will help you with your prototyping requirement with any 28/40-pin Microchip supporting USB interface microcontrollers.

- All ports terminating in separate Box Header with 5 VDC source option
- ICSP connector for programming the PIC's with ICD support
- Bridge in the input provides any polarity DC supply connection to the board
- 20 MHz crystal source
- Onboard +5V Voltage regulator
- Four mounting holes of 3.2 mm each
- PCB dimensions 77 mm x 87 mm



PIC18F USB DEVELOPMENT BOARD

- CN1 - PORTA
- CN2 - PORTB
- CN3 - PORTC
- CN4 - PORTD
- CN5 - PORTE
- CN7- USB CONNECTOR
- CN8 - INPUT SUPPLY (8 TO 18 VAC/VDC)
- J1 - SUPPLY SELECTION (E - EXT, U - USB)



SR.	QTY.	REF.	DESCRIPTION
1	1	BR1	W04/W06/W08 BRIDGE RECTIFIER
2	5	CN1,CN2,CN3,CN4,CN5	10 PIN BOX HEADER CONNECTOR
3	1	CN6	6 PIN BERG CONNECTOR
4	1	CN7	USB B TYPE RECEPTACLE
5	1	CN8	2 PIN PBT CONNECTOR
6	3	C1,C2,C7	0.1uF
7	2	C3,C6	220nF
8	2	C4,C5	15pF
9	1	C8	1000uF/25V
10	1	C9	470uF/16V
11	1	D1	RED LED
12	1	J1	3 PIN JUMPER WITH CLOSER
13	1	R1	1.5K
14	1	R2	1K
15	1	U1	PIC18F4550
16	1	U2	28-N PIN DIP IC SOCKET
17	1	U3	7805
18	1	X1	20MHz CRYSTAL
19	1	SOCKET	40 PIN DIP IC SOCKET
20	1	SCREW	SC02905
21	1	NUT	NT02900

