

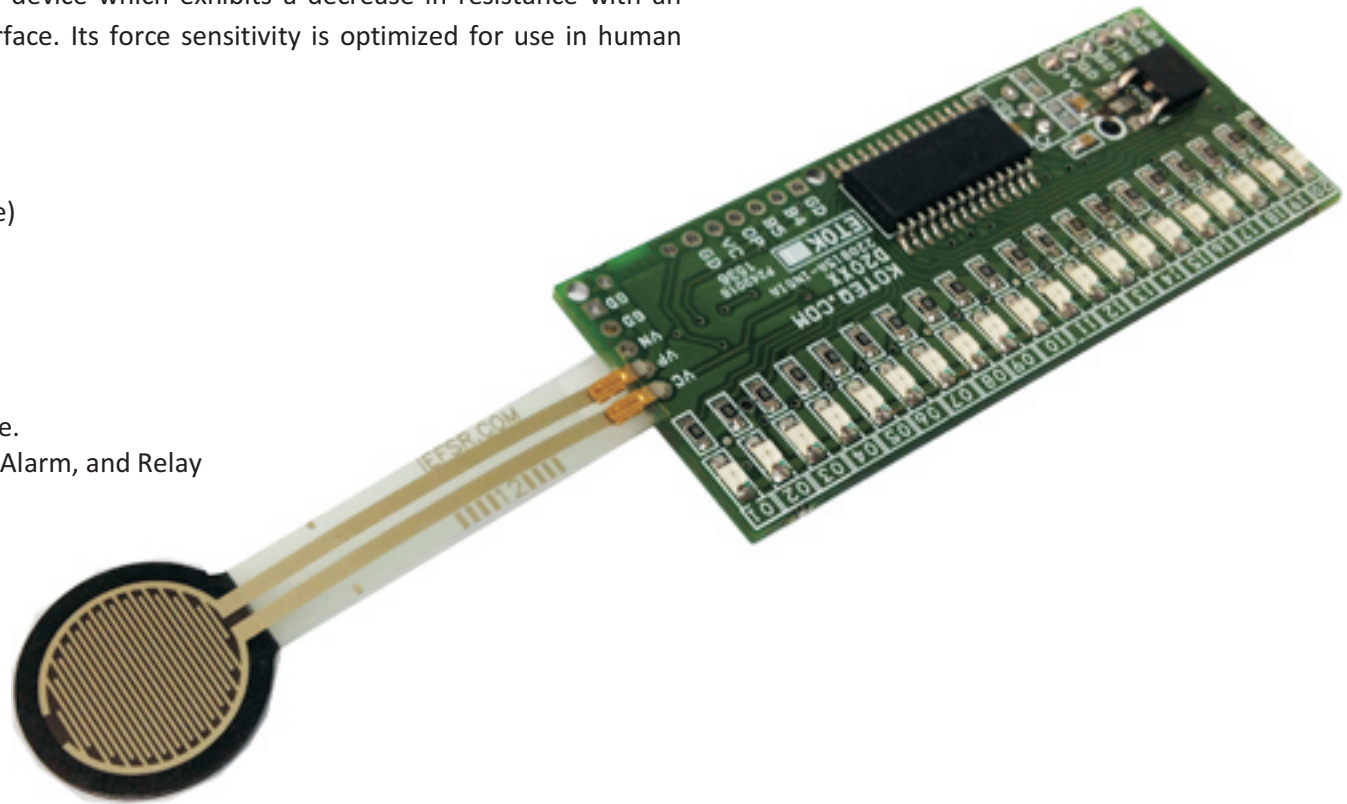
FLEX SENSOR TO BAR-GRAPH MONITOR USING PIC16F886

Tiny Bar-Graph displays provide a Red color bright, easy to read display which is proportional to the force applied on FLEX sensor surface. This Bar-Graph has 20 segments in single color and display Force applied on FLEX sensor. The Barograph force monitor is based on PIC microcontroller with 10 Bit resolution ADC. This high performance measurement provides unique capabilities and can be used in various applications. Each LED output provided with Solder- jumper for output set point, which can be configured for output control, alarm, Relay.

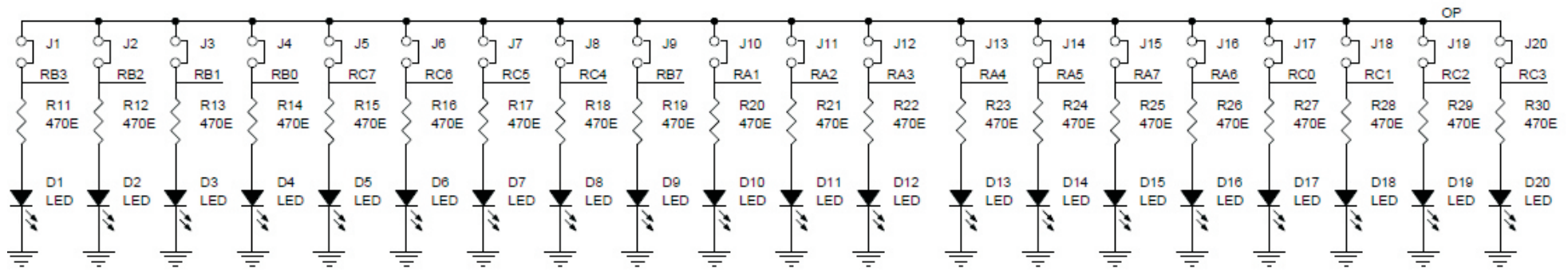
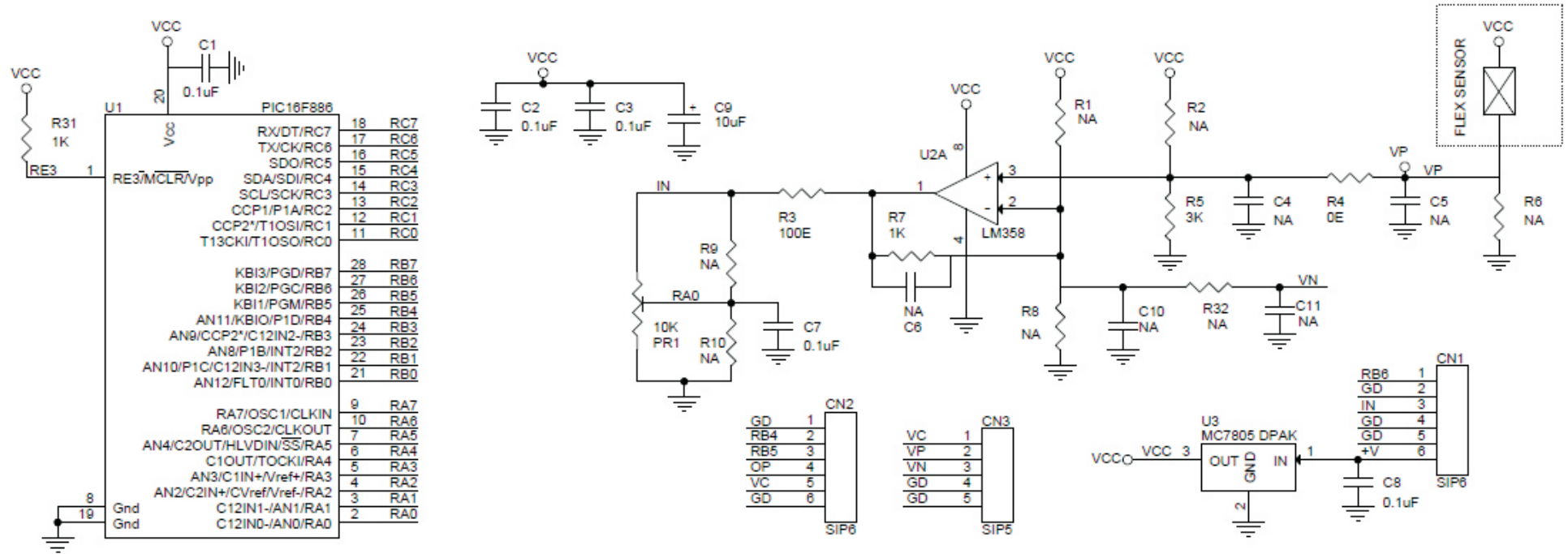
Force sensing resistors are polymer thick film device which exhibits a decrease in resistance with an increase in the force applied to the active surface. Its force sensitivity is optimized for use in human touch control of electronic devices.

Features

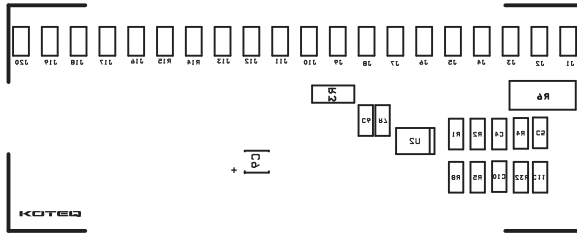
- Supply 7.5 V to 18V DC (Direct 5V Input Possible)
- Force Sensor (Flex Sensor)
- Output Display 20 Color RED SMD LEDs
- Compact Board with SMD Components
- Supply input Header Connector
- On Board 5V Regulator
- Onboard Trimpot to Calibrate The Display Range.
- Solder Jumper on each LED for Output Control, Alarm, and Relay
- PCB Dimensions 75.88 X 26.69 MM



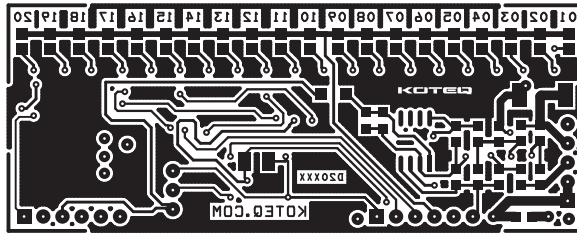
FLEX SENSOR TO BAR-GRAPH MONITOR USING PIC16F886



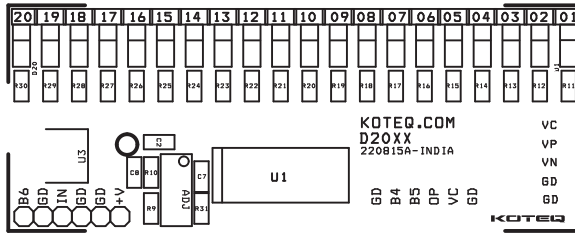
FLEX SENSOR TO BAR-GRAPH MONITOR USING PIC16F886



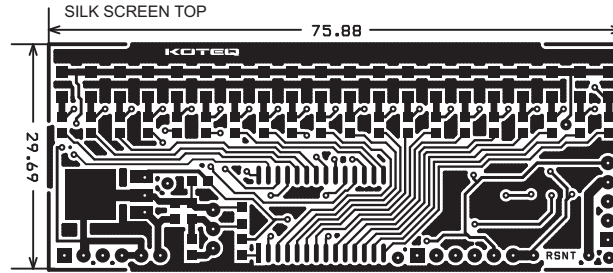
SILK SCREEN BOTTOM



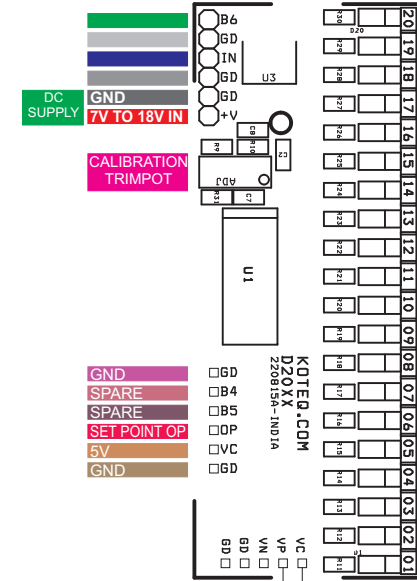
BOTTOM



SILK SCREEN TOP



TOP



FLEX SENSOR

BOM			
SR.	QNTY	REF.	DESC.
1	1	CN2	6 PIN HEADER CONNECTOR
2	1	CN3	5 PIN HEADER CONNECTOR
3	5	C1,C2,C3,C7,C8	0.1uF
4	12	R1,R2,C4,C5,R6,C6,R8,R9,R10,C10,C11,R32,CN1 OMIT	OMIT
5	1	C9	10uF
6	20	D1 To D20	RED LED SMD 1206
7	20	J1 To J20	PCB JUMPER
8	1	PR1	10K TRIMPOT
9	1	R3	100E SMD 0805
10	1	R4	0E SMD 0805
11	1	R5	3K SMD 0805
12	2	R7,R31	1K SMD 0805
13	20	R11 ToR30	470E SMD 0805
14	1	U1	PIC16F886 SMD SO28
15	1	U2	LM358 SMD SO8
16	1	U3	MC7805 DPAK
17	1	Z1	FLEX SENSOR

