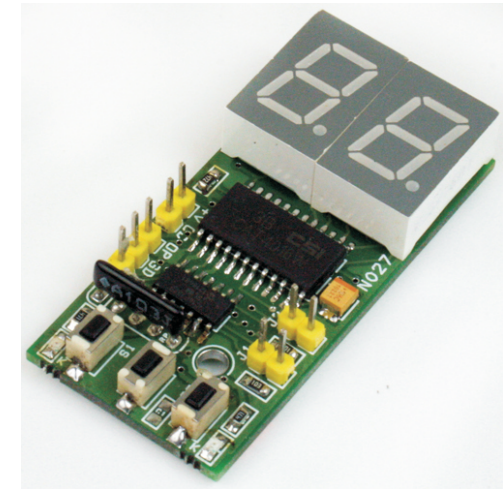


LED Based Strobe For Entertainment, Events & Warning Signals

Strobe provides regular flashes of light. Usually Strobes are designed using Xenon Tubes, Here is LED based simple solution can be used as strobe for entertainment and events and also as warning signals, Project is based on PIC16F1825 micro-controller with two digit frequency display.

Project provides TTL output signal, frequency 1Hz-25Hz, Tact switches provided to set the frequency.

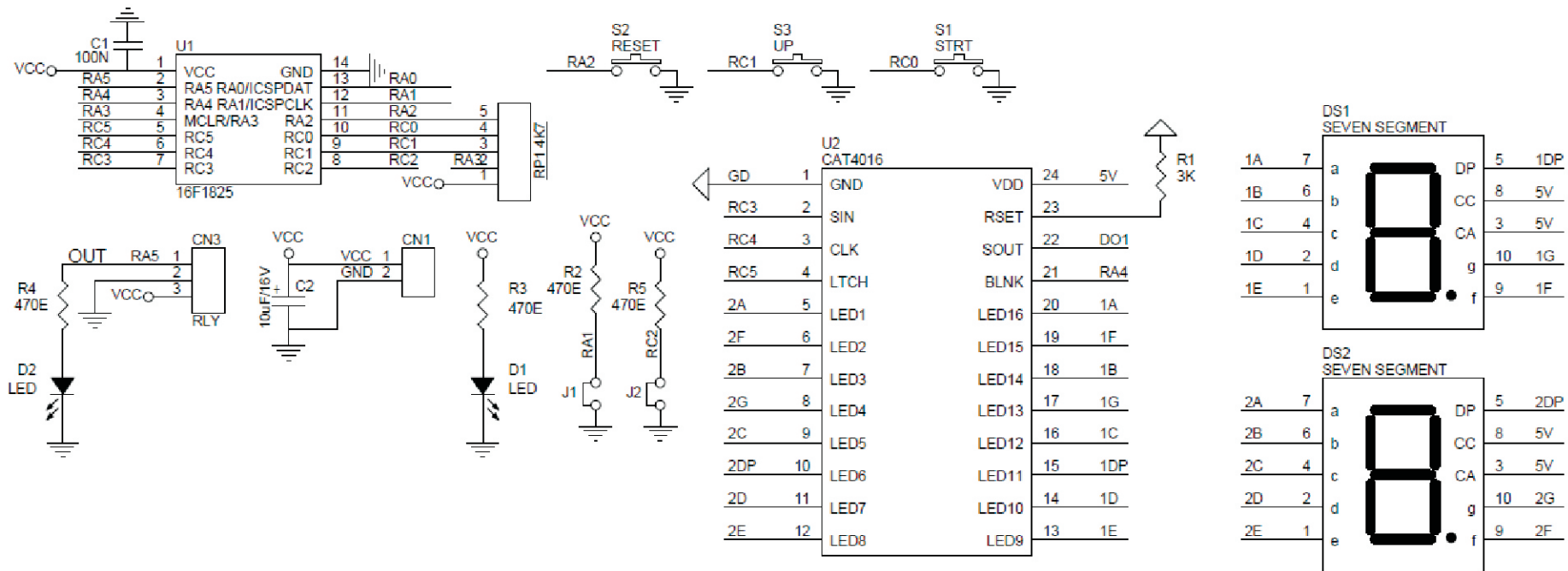


Features

- Supply 4.5 to 5V DC
- Frequency 1Hz To 25Hz
- Easy Interface with Relay Board
- Easy Interface with Solid State Relay
- On Board Power LED
- On Board Output LED
- Onboard Switch to set the frequency
- 2X7 Segment 0.5 Inch Display

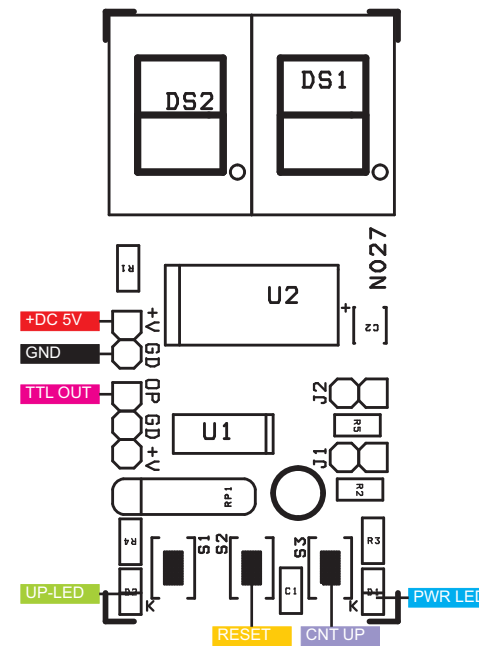
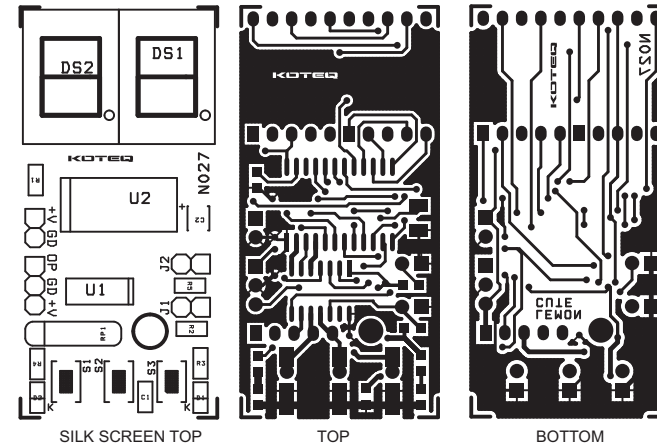
Applications

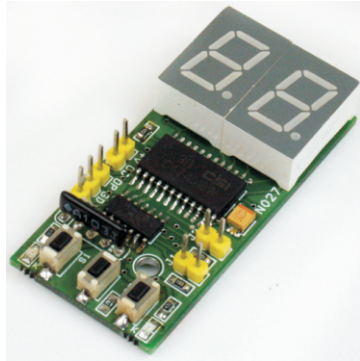
- Strobe for Entertainment
- Traffic Signal
- Warning Signal
- Ambulance Warning Signals



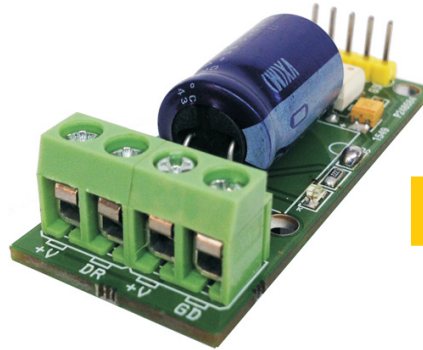
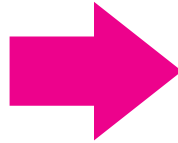
LED Based Strobe For Entertainment, Events & Warning Signals

BOM			
SR.	QNTY.	REF	DESC.
1	1	CN1	2 PIN HEADER CONNECTOR
2	1	CN3	3 PIN HEADER CONNECTOR
3	1	C1	0.1uF SMD 0805
4	1	C2	10uF/16V SMD TANTLUM 1210
5	2	DS1,DS2	COMON ANODE RED 7 SEGMENT 0.5" DISPLAY
6	2	D1,D2	LED SMD 0805
7	2	J1,J2	OMIT
8	1	RP1 4K7	5 PIN 4K7 RESISTOR PACK
9	1	R1	3K SMD 0805
10	4	R2,R3,R4,R5	470E SMD 0805
11	1	S1	TACT SWITCH
12	1	S2	TACT SWITCH
13	1	S3	TACT SWITCH
14	1	U1	PIC16F1825 SMD SO14
15	1	U2	CAT4016 SMD SO24

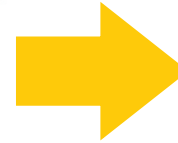




FLASH PULSE GENERATOR



SOLID STATE RELAY



LED LIGHT



0 7 0 0 5