

2 Channel Relay Shield for Arduino Nano

2 Channel Mini easy to use Relay shield for Arduino Nano consist ULN2003 IC and 2 Mini 12V Relays with NO/NC Switch of 2A-24V Load Capacity. ULN2003 used as Relay coil driver, Relay can be controlled from D3 and D4 of Arduino Nano. Three pin Header Connector CN1 and CN2 provided to connect the Load. Relay has normally open and normally closed switch with 2A and 24V capacity and also can handle 120V AC but it's not advisable. CN2 supply input 12V DC. LED D2 and D3 output LEDs.

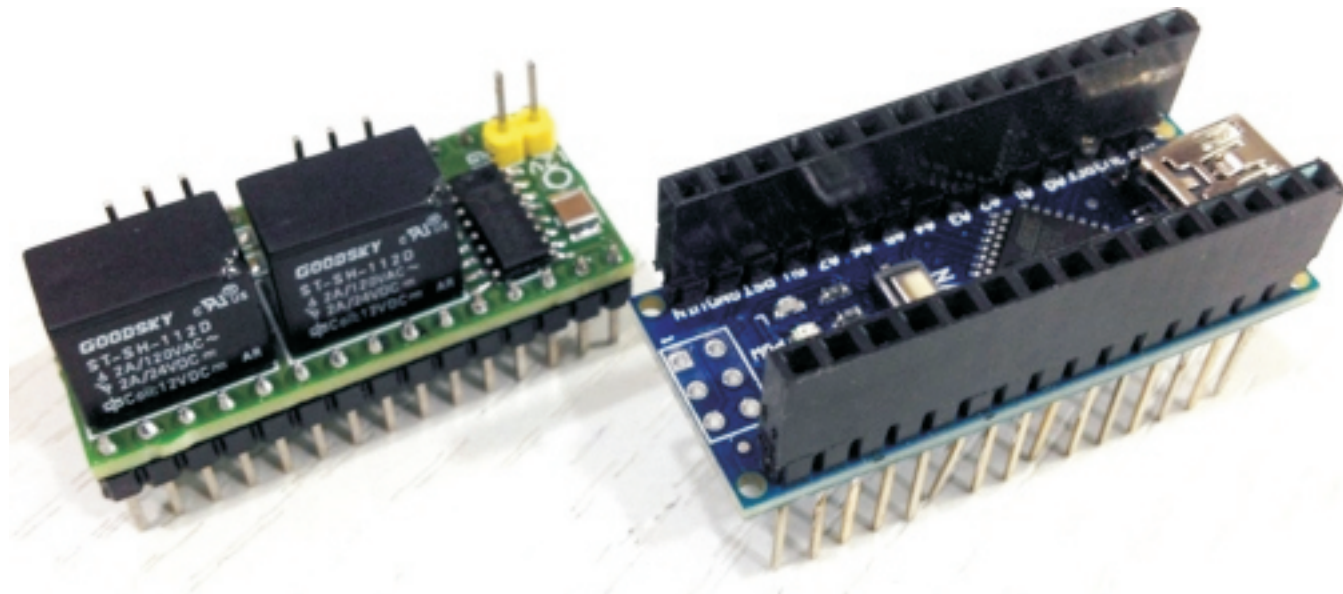
Features

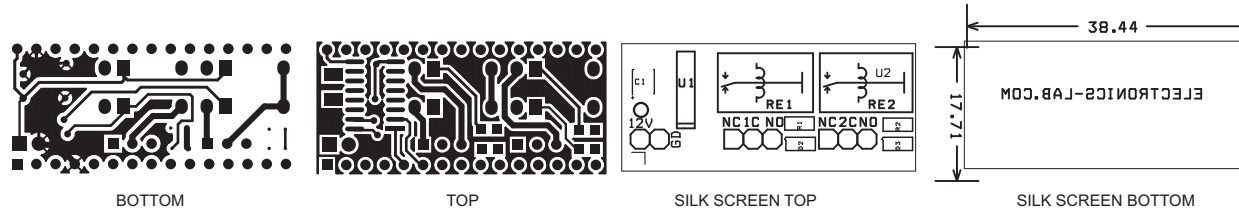
Supply 12V DC

Relay Load 2A-24V DC (120V AC Possible with Care)

Relay Switch Normally Closed/Normally Open

On Board LED D2 and D3 Operation Indicator





BOM			
SR.	QNTY.	REF.	DESC.
1	2	CN1,CN2	3 PIN HEADER CONNECTOR
2	1	CN3	2 PIN HEADER CONNECTOR
3	1	C1	10uF/16V SMD 1210
4	2	D2,D3	LED SMD 0805
5	2	RE1,RE2	12V RELAY GOODSKY ST-SH-112D
6	2	R1,R2	1K SMD 0805
7	1	U1	ULN2003A/SO
8	1	U2	ARDUINO NANO

