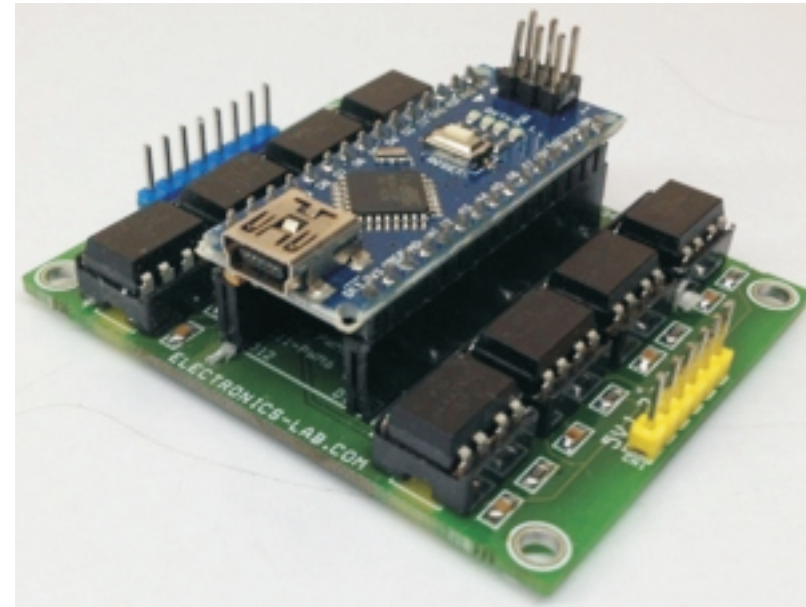


8 Channel Optically Isolated I/O Shield for Arduino Nano

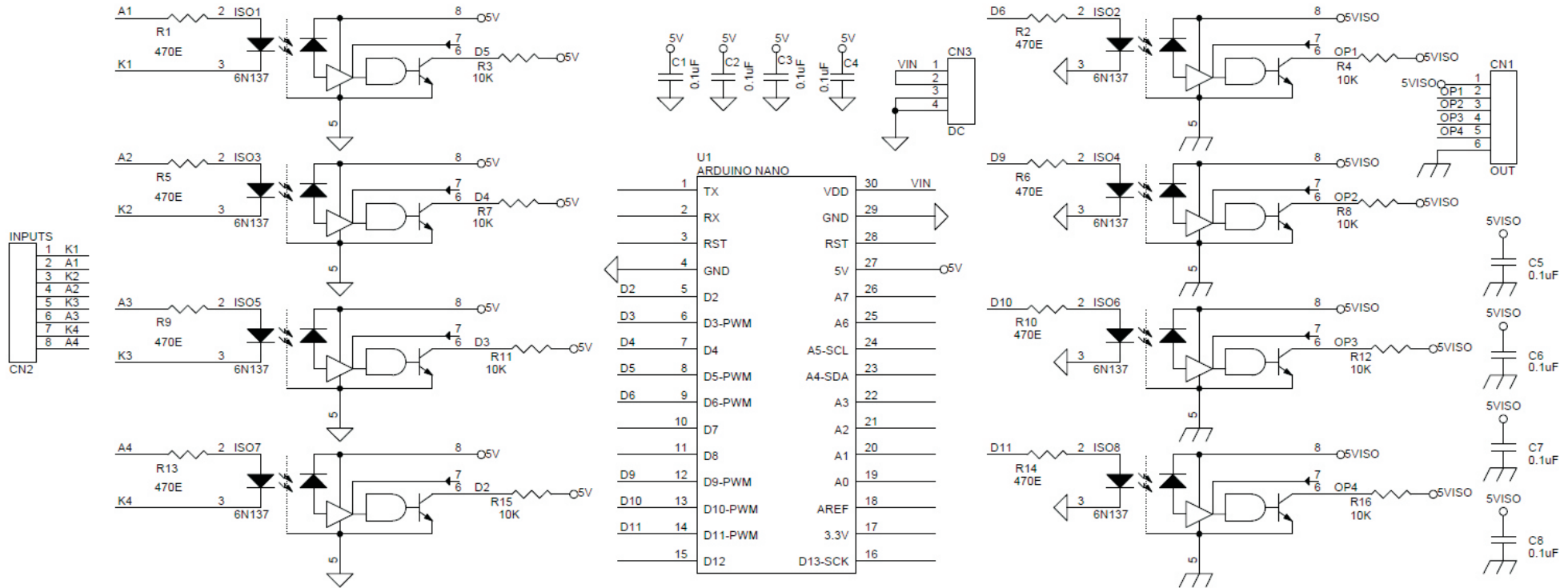
The shield enables you to interface many things to Arduino Nano using optically isolated inputs and outputs. The circuit consist 4 channel inputs and 4 channel outputs, all 8 I/O lines are optically isolated. The project can help in various industrial applications where EMI noise and high voltage lines can damage the Arduino Nano. Circuit built using 8X6N137 optocoupler, the optocoupler can handle frequency up to 10 MHz

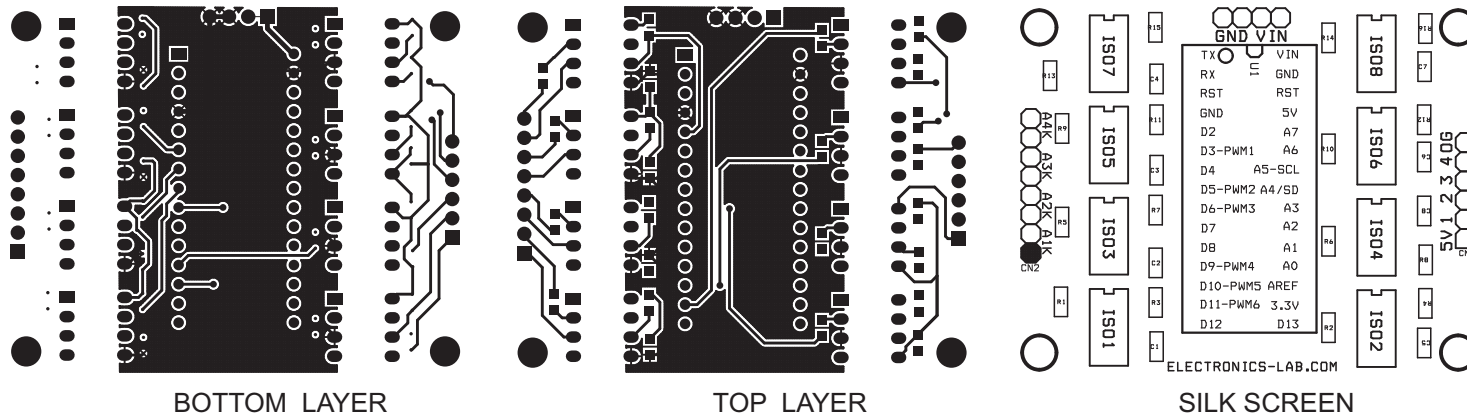
Features

- Supply Arduino Nano 7-12V DC
- Supply to Outputs of Optocoupler 5V DC
- All Outputs are TTL 5V
- Inputs 3.3V to 5V DC
- 4 Channel Inputs
- 4 Channel Outputs
- PCB Dimensions 61.09 mm X 48.89 mm



<i>BOM</i>			
<i>SR.</i>	<i>QNTY.</i>	<i>REF.</i>	<i>DESC.</i>
1	1	CN1	6 PIN HEADER CONNECTOR
2	1	CN2	8 PIN HEADER CONNECTOR
3	1	CN3	4 PIN HEADER CONNECTOR
4	8	C1,C2,C3,C4,C5,C6,C7,C8	0.1uF SMD 0805
5	8	ISO1,ISO2,ISO3,ISO4,ISO5,ISO6,ISO7,ISO8	6N137 OPTOCOUPLER
6	8	R1,R2,R5,R6,R9,R10,R13,R14	470E SMD 0805
7	8	R3,R4,R7,R8,R11,R12,R15,R16	10K SMD 0805
8	1	U1	ARDUINO NANO SHIELD





PCB Dimensions 61.09mm X 48.89mm

ARDUINO SUPPLY INPUT

