

EEPROM adapter for ATMEL 89 Programmer v2.0

Revised: Monday, March 31, 2003

Revision: 1

Bill Of Materials March 31,2003 10:36:47 Page1

Item	Quantity	Reference	Part
1	1	D1	1N4148
2	2	J1,J2	DIP40
3	1	J3	2-pin Jumper
4	1	R1	3K3

Devices

The EEprom programmer software supports the following devices.

28C16 28C256

28C17 29C256

28C64

Hardware

Diode D1 and resistor R1 provide the VDD isolation when programming the 24 pin devices. The jumper J3 must be shorted for 24 pin devices, and open circuit for 28 pin device programming.

Following EEPROMs are pin compatible with their EPROMs version,

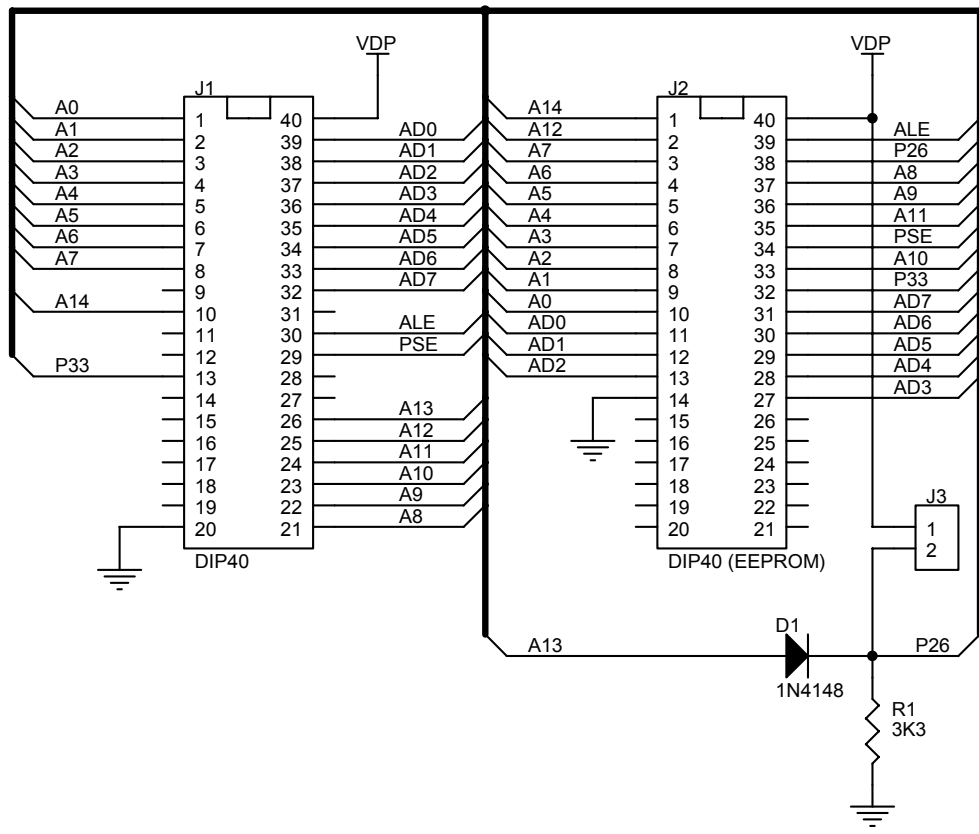
28C16 ---> 2716

28C64 ---> 2764

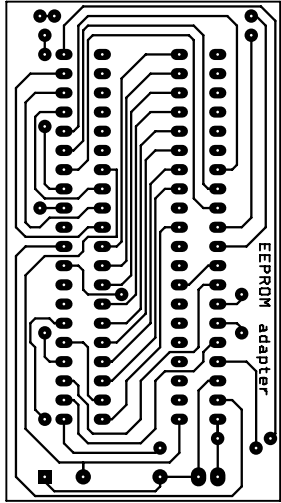
29C256 ---> 27256

The software for this adapter is located here:

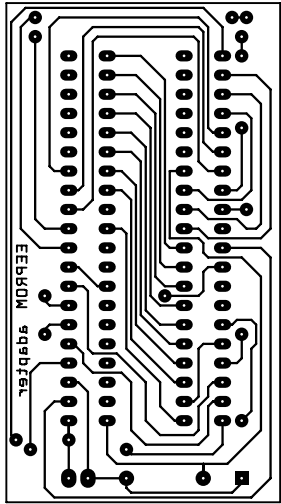
http://chaokhun.kmitl.ac.th/~kswichit/E2RomPgm_web/PgmE2w.zip



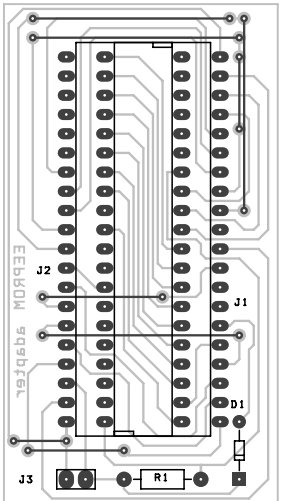
Title		
EEPROM adapter for ATMEL 51 Programmer		
Size	Document Number	Rev
A	<Doc>	1
Date:	Monday, March 31, 2003	Sheet 1 of 1



PCB



PCB reflected



PCB and Silkscreen