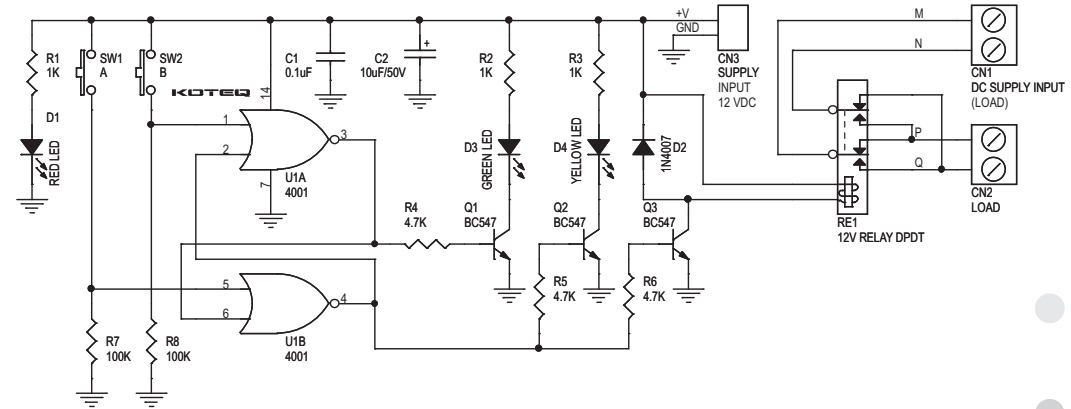


## RELAY BASED DC MOTOR DIRECTION CONTROLLER WITH TWO TACT SWITCH

DC Motor Direction Control project offers direction control using digital logic gates and a DPDT relay.

- Supply input 12 VDC @ 75 mA
- Relay Output : upto 7 A
- Onboard tactile switch for direction control
- Relay based drive design with diode protection
- LED indicator for direction indication
- Power-On LED indicator
- Terminal pins and screw terminal connector for easy input / output connection
- Four mounting holes of 3.2 mm each
- PCB dimensions 41 mm x 81 mm



- CN1 Connector : Motor Load upto 7amps
- CN2 Connector : Motor (Load)
- CN3 Connector : Logic supply input 12 VDC, 300 mA
- D1 LED : Power indication
- D3,D4 LED : Direction indication
- SW1 Switch : CW direction (depend motor supply polarity)
- SW2 Switch : CCW direction (depend motor supply polarity)

SR.	QTY.	REF.	DESCRIPTION
1	1	CN1	2 PIN SCREW TERMINAL CONNECTOR
2	1	CN2	2 PIN SCREW TERMINAL CONNECTOR
3	1	CN3	2 PCB PINS
4	1	C1	0.1uF
5	1	C2	10uF/50V OR 63V
6	1	D1	RED LED
7	1	D2	1N4007
8	1	D3	GREEN LED
9	1	D4	YELLOW LED
10	3	Q1,Q2,Q3	BC547
11	1	RE1	12V RELAY DPDT
12	3	R1,R2,R3	1K
13	3	R4,R5,R6	4.7K
14	2	R7,R8	100K
15	1	SW1	TACT SWITCH
16	1	SW2	TACT SWITCH
17	1	U1	4001
18	1	SOCKET	14 PIN DIP IC SOCKET
19	1	WIRE JUMPER	WIRE JUMPER

