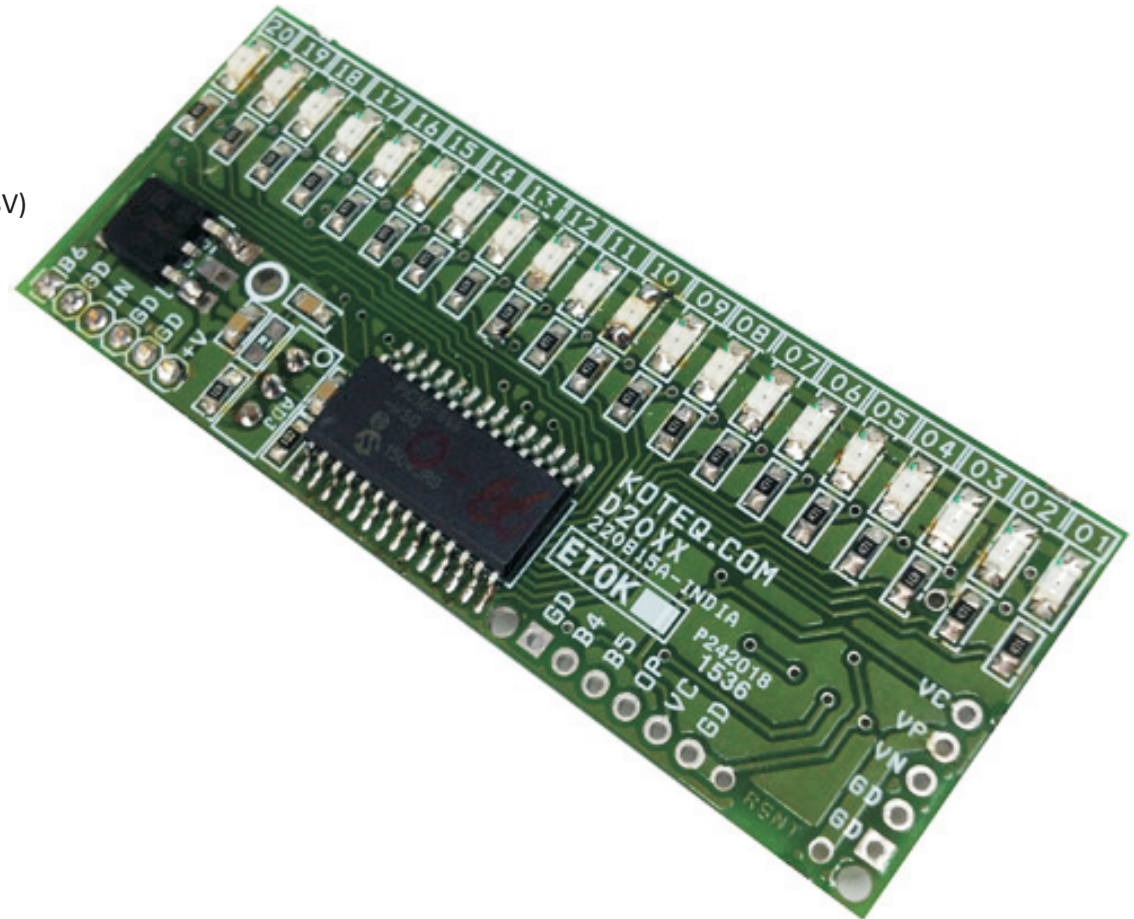


BAR-GRAPH CURRENT METER RANGE 0-1AMP. (PIC16F686)

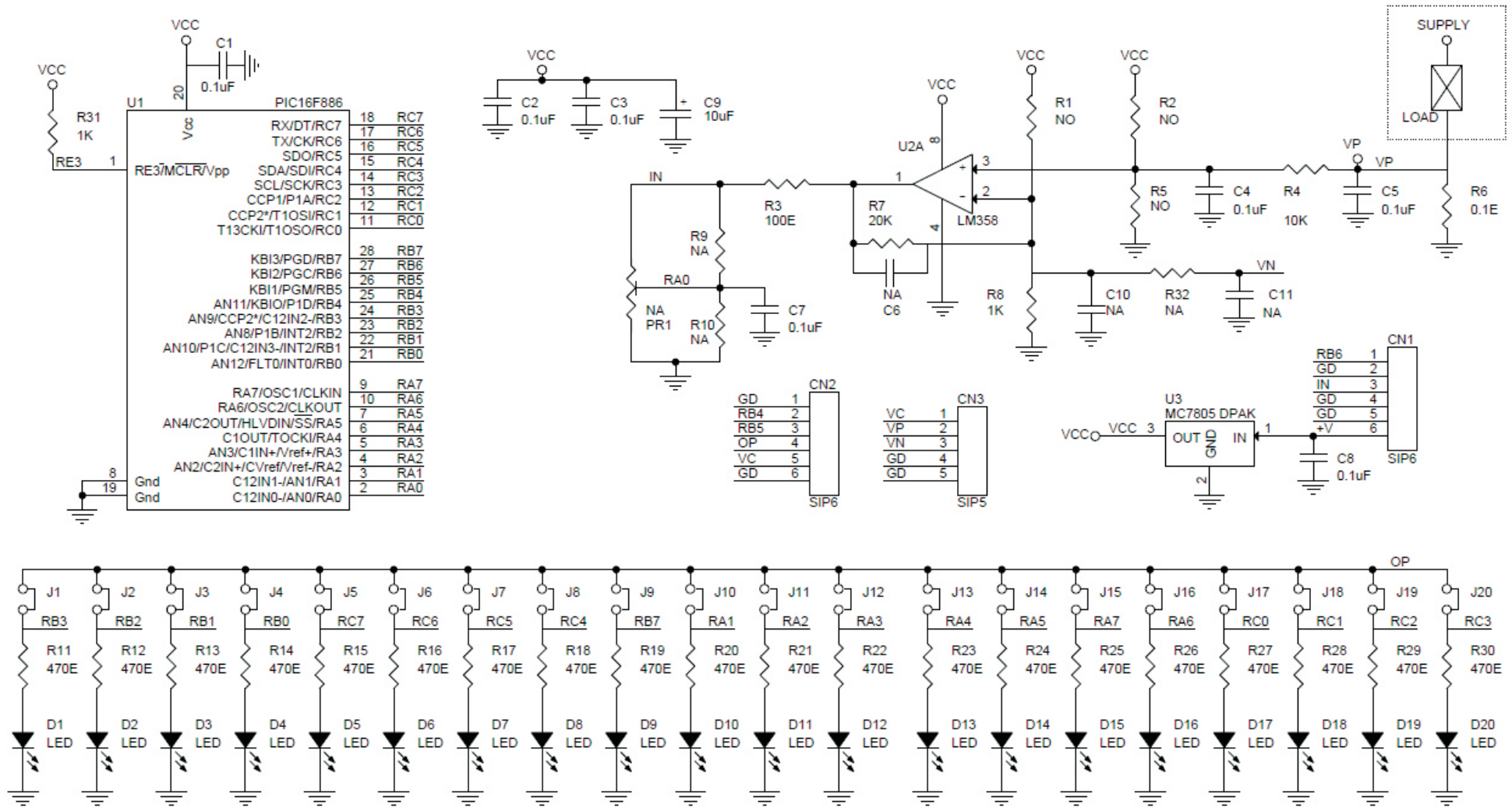
Tiny Bar-Graph displays provide a Red color bright, easy to read display of current range from 0 to 1A. This Bar-Graph has 20 segments in single color and display 0 to 1Amp Current. The Barograph current monitor is based on PIC microcontroller with 10 Bit resolution ADC. This high performance measurement provides unique capabilities and can be used in various applications. The Bar can display 0 to 1Amp with 20 LED with 50mA (Approx.) resolutions. Each LED output provided with Solder- jumper for output set point can be configured for control, alarm, Relay Trigger, ideal solution to check the DC Motor current, mainly its measure the lower side current.

Features

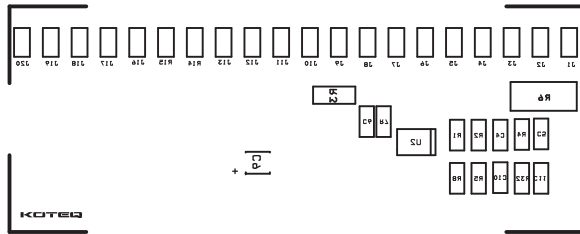
- Supply 7.5 V to 18V DC (Direct 5V Input Possible)
- Input 0 to 1Amps across onboard shunt resistor (Max Load supply 48V)
- Output Display 20 Color RED SMD LEDs
- Compact Board with SMD Components
- Supply input Header Connector
- On Board 5V Regulator
- Solder Jumper on each LED for Output Control, Alarm, and Relay



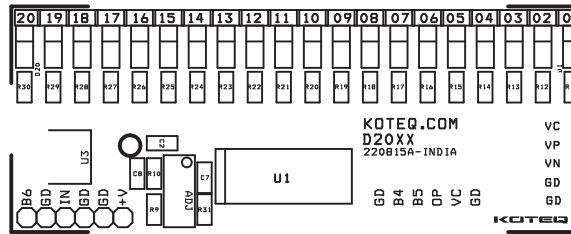
BAR-GRAPH CURRENT METER RANGE 0-1AMP. (PIC16F686)



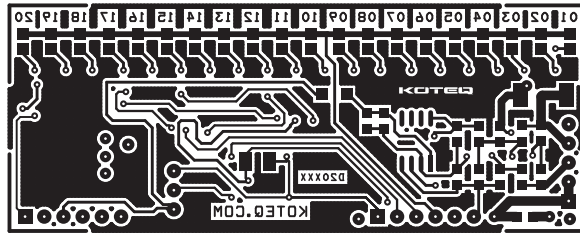
BAR-GRAPH CURRENT METER RANGE 0-1AMP. (PIC16F686)



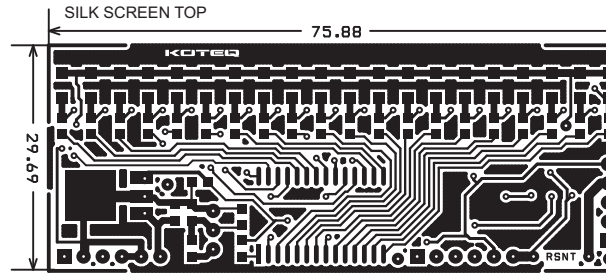
SILK SCREEN BOTTOM



SILK SCREEN TOP



BOTTOM



TOP

BOM			
SR.	QNTY.	REF.	DESC.
1	2	CN1,CN2	6 PIN HEADER CONNECTOR
2	1	CN3	5 PIN HEADER CONNECTOR
3	2	C1,C5	0.1uF SMD 0805
4	5	C2,C3,C4,C7,C8	0.1uF SMD 0805
5	6	C6,R9,R10,C10,C11,R32	OMITT
6	1	C9	10uF 6V SMD 1210
7	20	D1,D2,D3,D4,D5,D6,D7,D8,D9,D10,D11,D12,D13,D14,D15,D16,D17,D18,D19,D20	LED SMD 0805
8	20	J1,J2,J3,J4,J5,J6,J7,J8,J9,J10,J11,J12,J13,J14,J15,J16,J17,J18,J19,J20	SOLDER JUMPER
9	1	R4	10K
10	3	R1,R2,R5	OMIT
11	1	R6	0.1E SMD 2512
12	1	R7	20K SMD 0805
13	2	R8,R31	1K SMD 0805
14	20	R11,R12,R13,R14,R15,R16,R17,R18,R19,R20,R21,R22,R23,R24,R25,R26,R27,R28,R29,R30	470E SMD 0805
15	1	U1	PIC16F886 SO28
16	1	U2	LM358 SO14
17	1	U3	7805 DPACK SMD
18	1	R4	OMIT
19	1	PR1	OMIT

BAR-GRAPH CURRENT METER RANGE 0-1AMP. (PIC16F686)

