

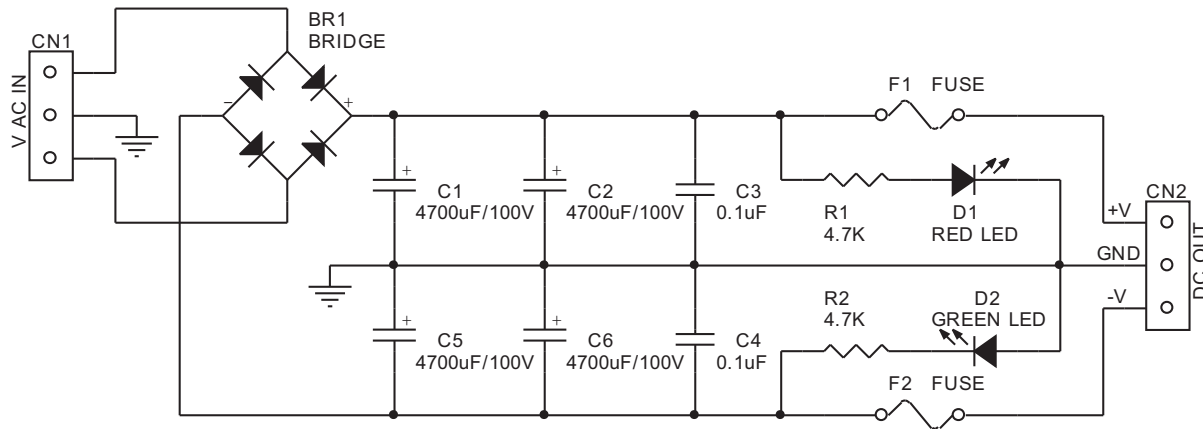
DUAL 90V/10A UNREGULATED POWER SUPPLY

This project is designed to provide symmetrical output unregulated, high voltage, high current for your demanding needs. Ideally suited for use in Audio Amplifier design projects.

- Input - maximum 65 VAC center-tap, 10Amp
- Symmetrical unregulated, individually fused outputs
- 10A bridge rectifier on board
- LED indication for both the outputs
- PCB mounted LUGS for connecting of input and output
- Four mounting holes of 3.2 mm each
- PCB Dimensions 154 mm x 84 mm



SR.	QTY.	REF.	DESCRIPTION
1	1	BR1	BR1010
2	1	CN1	3 LUGS V
3	1	CN2	3 LUGS H
4	4	C1,C2,C5,C6	4700uF/100V SNAP-IN
5	2	C3,C4	0.1uF/100V
6	1	D1	RED LED
7	1	D2	GREEN LED
8	2	F1,F2	FUSE
9	2	R1,R2	4.7K



DUAL 90V/10A UNREGULATED POWER SUPPLY

