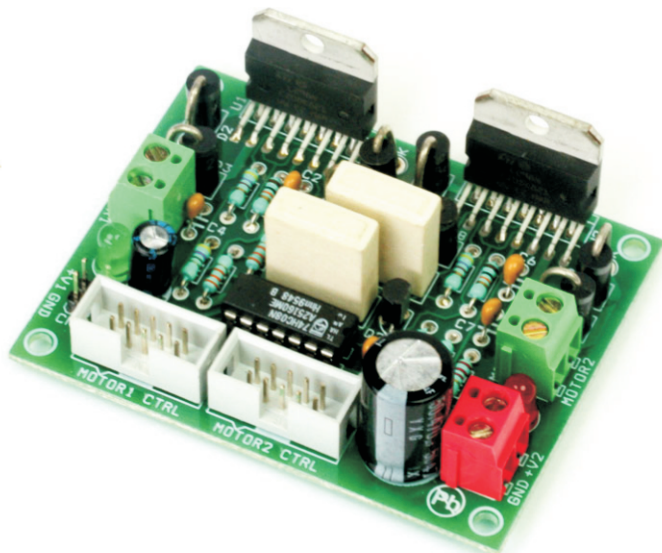


2X L298 Dual DC Motor Driver Board for Robots

2XL298 H-Bridge Dual Motor driver project can control two DC motors connected to it. The circuit is designed around popular dual H-Bridge L298 from ST. Motor supply 7V To 46V DC, Load 2Amp Each Channel.

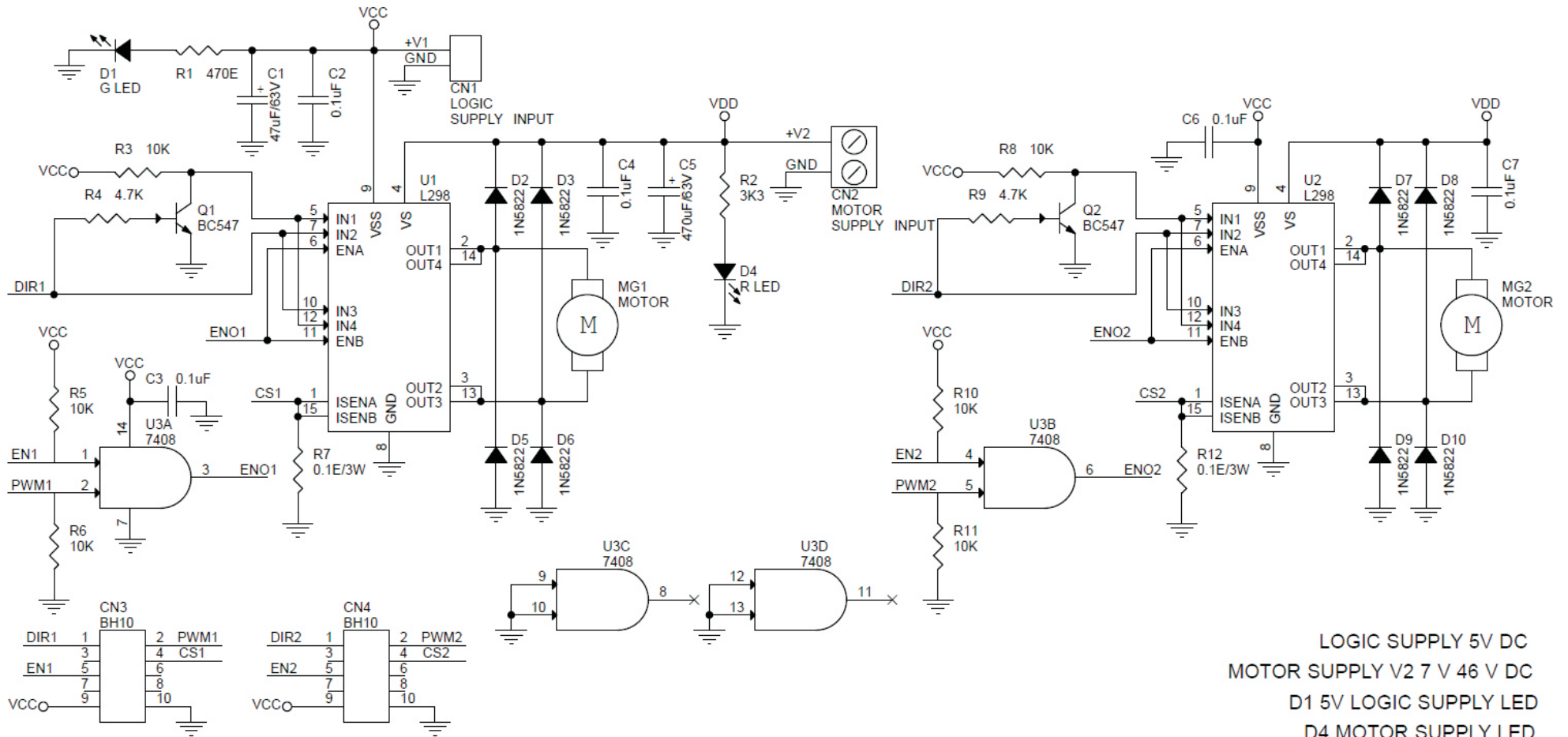
Features

- Motor supply V2: 7 to 46 VDC
- Logic Supply V1 : 5V DC
- Input Signal: Enable, Dir. , PWM
- Board Provides Current Feed Back (On Board Shunt Resistor)
- Control Logic Input: Standard TTL logic level
- Output DC drive to motor: up to 2A + 2A
- External Diode Bridge for protection
- On Board 5V Power LED
- On Board Motor Supply LED
- 10X Box Header Connector for Inputs and PWM
- Header Connector For Logic Supply
- Screw Terminal for Motor Connections
- Screw Terminal For Motor Supply

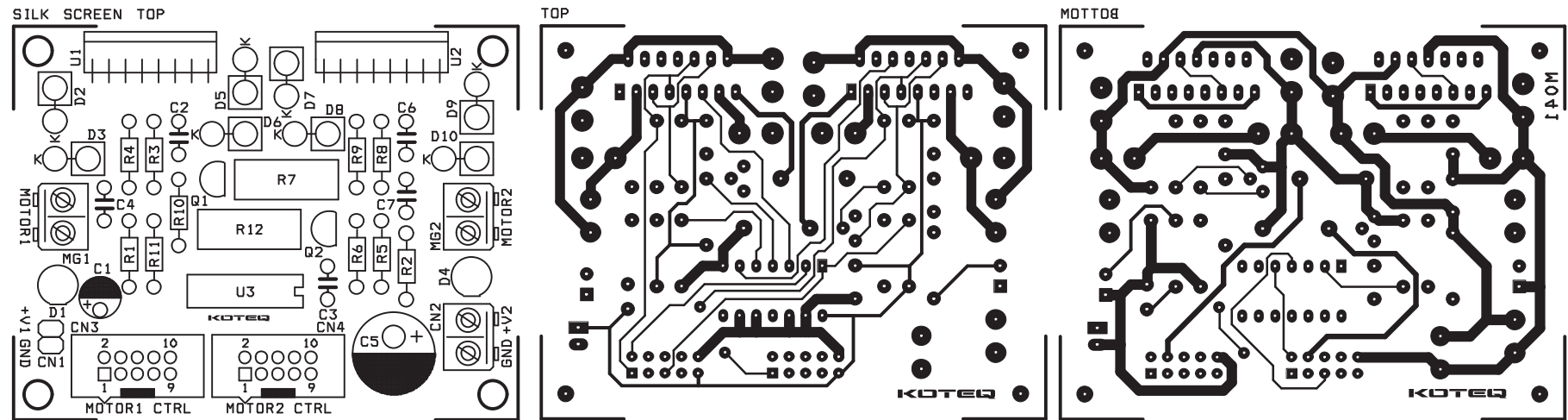


BOM			
SR.	QNTY	REF.	DESC.
1	1	CN1	2 PIN HEADER
2	1	CN2	2 PIN SCREW TERMINAL
3	2	CN3,CN4	10 PIN BOX HEADER
4	1	C1	47uF/63V
5	5	C2,C3,C4,C6,C7	0.1uF
6	1	C5	470uF/63V
7	1	D1	GREEN LED
8	8	D2,D3,D5,D6,D7,D8,D9,D10	1N5822
9	1	D4	RED LED
10	2	MG1,MG2	MOTOR
11	2	Q1,Q2	BC547
12	1	R1	470E
13	1	R2	3K3
14	2	R3,R8	10K
15	2	R4,R9	4.7K
16	4	R5,R6,R10,R11	10K
17	2	R7,R12	0.1E, 3W
18	2	U1,U2	L298
19	1	U3	74HC08

2X2A L298 Dual DC Motor Driver Board for Robots



2X2A L298 Dual DC Motor Driver Board for Robots



0 7 0 0 5