

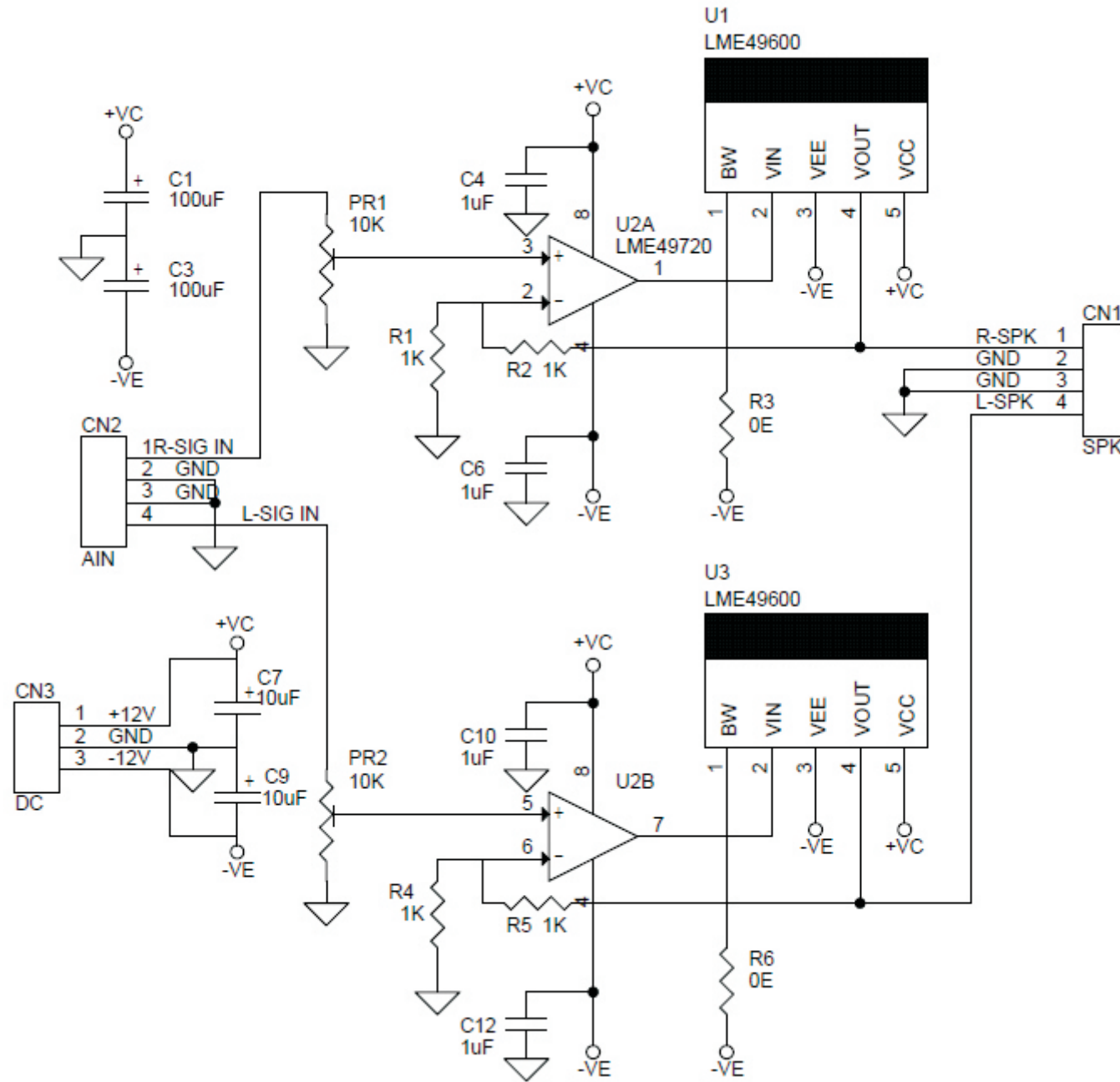
Hi-Fi Stereo Headphone Amplifier

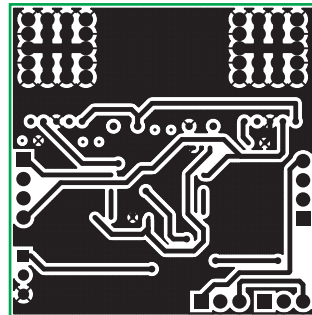
The project is the ideal solution for high output, high performance high fidelity stereo head phone amplifier. The project consist Op-Amp LME498720 and LME49600 as output driver. The LME49600 is able to drive 32Ω headphones to a dissipation of greater than 500mW at 0.00003% THD+N while operating on $\pm 12V$ power supply voltages. The LME49600 is a high performance, low distortion high fidelity 250mA audio buffer. The LME49600 is designed for a wide range of applications. The LME49600 is fully protected through internal current limit and thermal shutdown.

Features

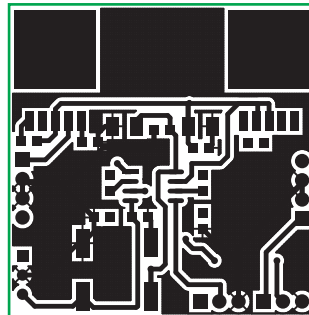
- Supply +/-12V
- Output Load 32Ohms Headphone
- Input Line Level Audio Signal
- Onboard Volume Control



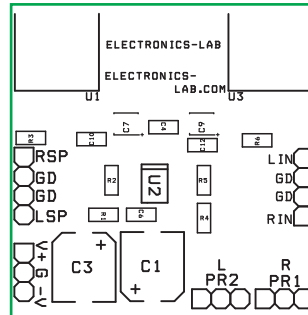




BOTTOM



TOP



SILK SCREEN TOP

| BOM | | | |
|-----|-------|---------------|------------------------|
| SR. | QNTY. | REF. | DESC. |
| 1 | 1 | CN1 | 4 PIN HEADER CONNECTOR |
| 2 | 1 | CN2 | 4 PIN HEADER CONNECTOR |
| 3 | 1 | CN3 | 3 PIN HEADER CONNECTOR |
| 4 | 2 | C1,C3 | 100uF SMD |
| 5 | 4 | C4,C6,C10,C12 | 1uF SMD 0805 |
| 6 | 2 | C7,C9 | 10uF SMD 1210 |
| 7 | 2 | PR1,PR2 | 10K POTENTIOMETER |
| 8 | 4 | R1,R2,R4,R5 | 1K SMD 0805 |
| 9 | 2 | R3,R6 | 0E SMD 0805 |
| 10 | 2 | U1,U3 | LME49600 |
| 11 | 1 | U2 | LME49720 SOIC8 |

