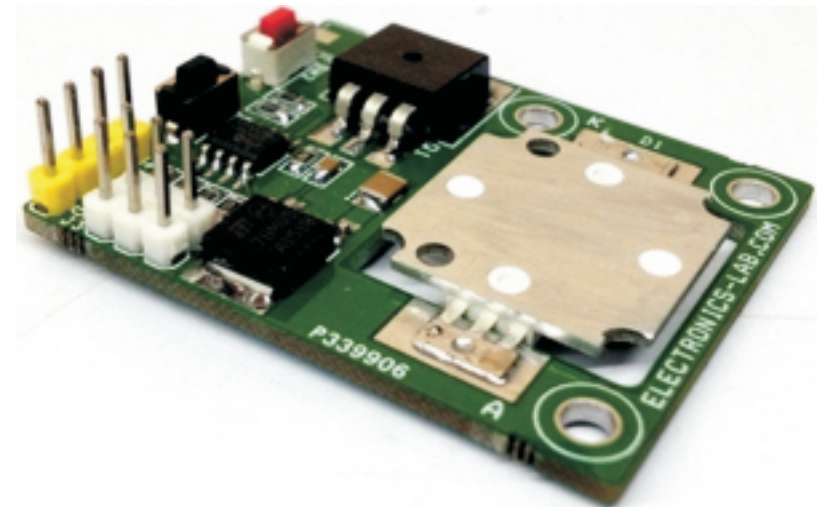


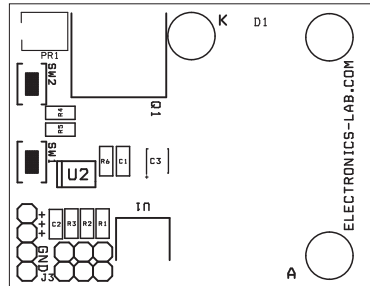
LED Driver

The project described here is small 5W LED driver, the project can be used in variety of applications by changing the code, and example code provided is simple digital toggle switch using two tactile switches. One switch for on other for off, on board small trimmer potentiometer helps to develop LED dimmer, jumper can be used for LED on/off timer projects, PIC12F683 from microchip is heart of the project, TIP122 NPN BJT helps to drive the LED. It is advisable to used large size heat sink for LED.

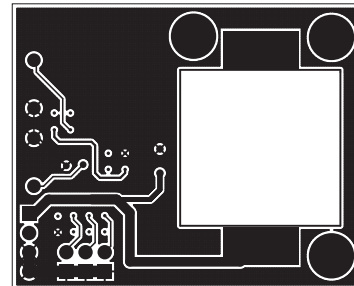
Features

- Supply 12V
- LED load current Up to 800mA
- Tactile Switch for Power On/Off
- PCB Dimensions 45.55 X 36.70 MM

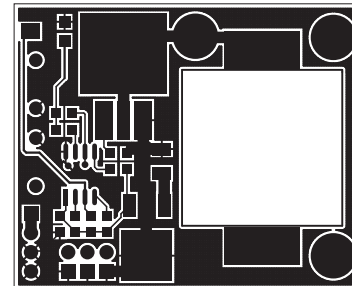




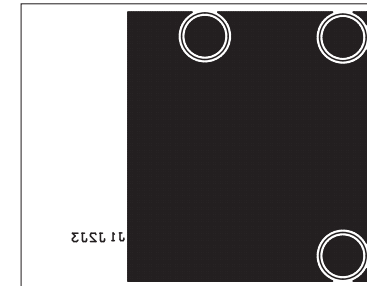
SILK SCREEN TOP



BOTTOM LAYER



TOP LAYER



SILK SCREEN BOTTOM

PCB DIMENSIONS 45.55MM X 36.70MM

BOM			
SR.	QNTY.	REF	DESC
1	1	CN1	4 PIN HEADER CONNECTOR
2	2	C1,C3	10uF/16V SMD 1210
3	1	C2	0.1uF SMD 0805
4	1	D1	WHITE LED 5W LED
5	3	J1,J2,J3	JUMPER/CLOSURE
6	1	PR1	5K SMD 3MM
7	1	Q1	TIP122 TO 220
8	5	R1,R2,R3,R4,R5	10K SMD 0805
9	1	R6	2K2 SMD 0805
10	1	SW1	START TACT SWITCH
11	1	SW2	STOP SWITCH
12	1	U1	78M05 DPAK
13	1	U2	PIC12F683 SO8