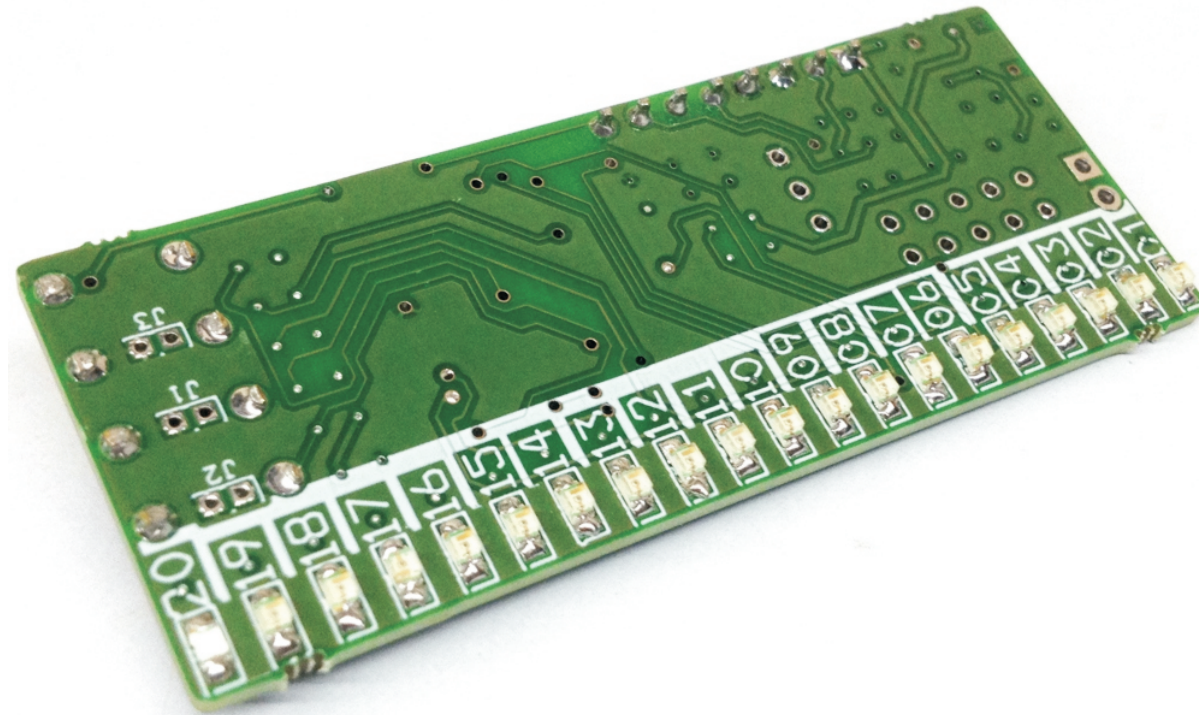


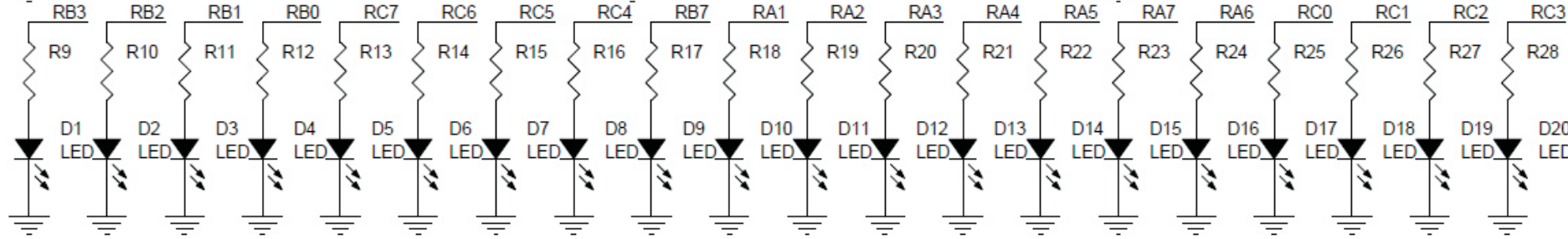
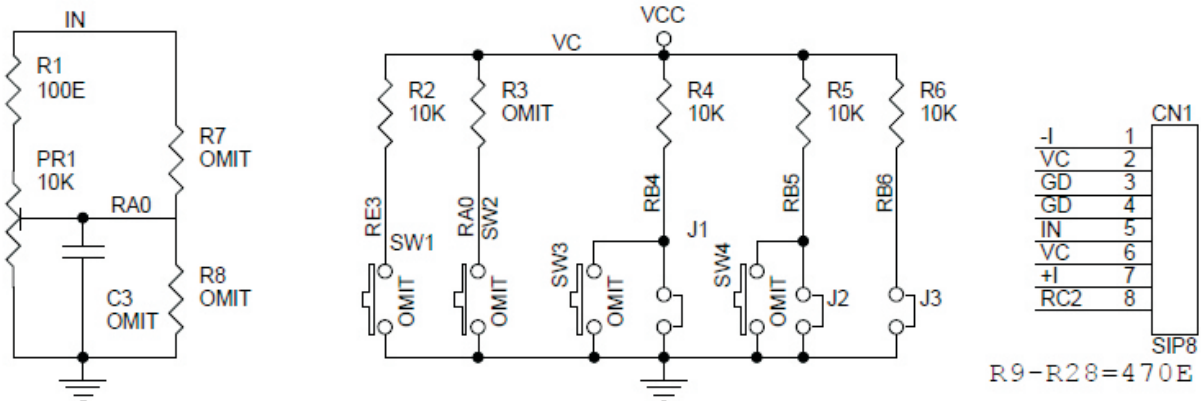
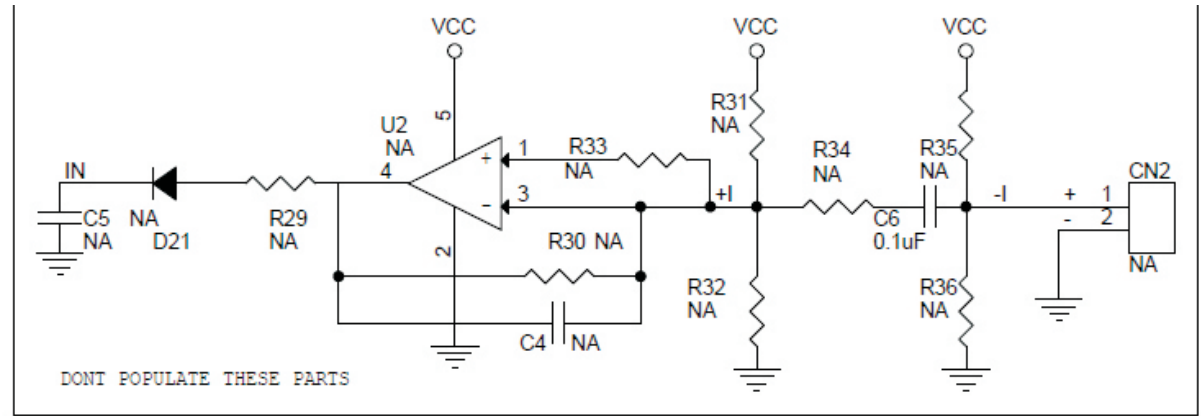
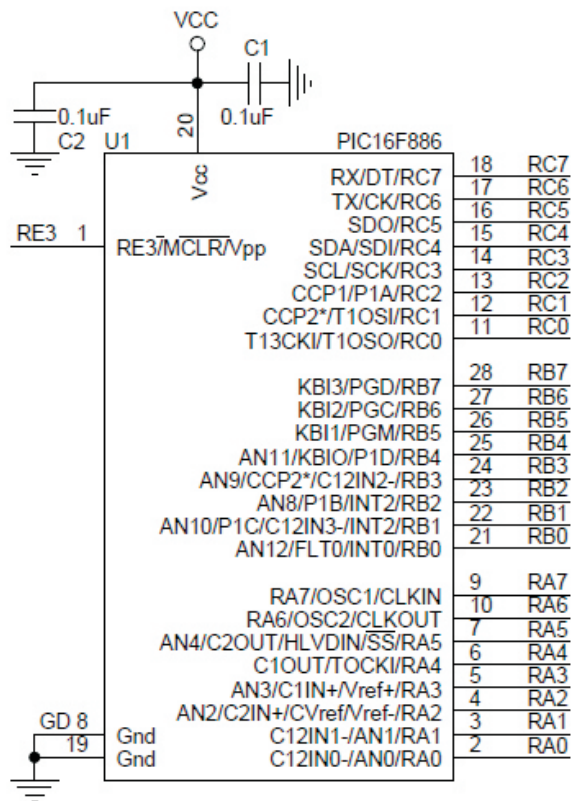
LED Lighting Effects Generator

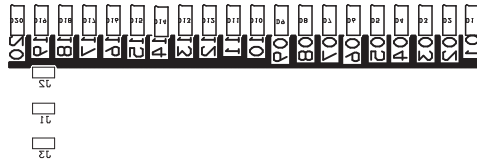
The project generates 8 different LED-lighting patterns (Visual Effects). The project demonstrates different chasing effects are generated using 20 SMD LEDs and along with speed adjustable of LED-lighting moving with help of on board trimmer potentiometer. 9 patterns can be set using 3 on board PCB jumpers, Circuit comprising PIC16F886 micro-controller from microchip and 20 SMD LEDs. Circuit works with 5V DC, Trimmer potentiometer provided to adjust speed of sequence.

Feature

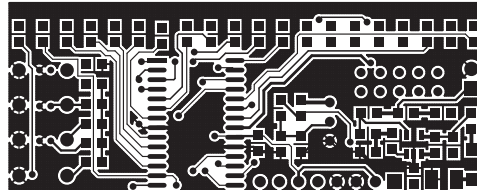
- Supply 5V DC
- 8 Different Patters Possible (LED-Lighting Sequence)
- Chasing speed adjustable



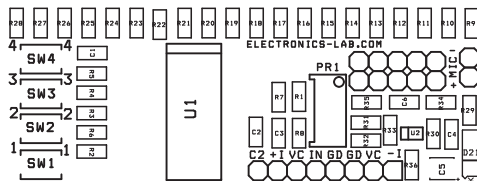




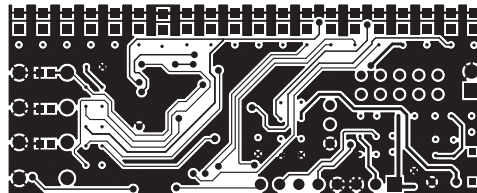
SILK SCREEN BOTTOM



TOP LAYER



SILK SCREEN TOP



BOTTOM LAYER

JUMPER SETTINGS - PATTERNS			
J1	J2	J3	PATTERNS
CLOSE	CLOSE	CLOSE	1
CLOSE	CLOSE	OPEN	2
CLOSE	OPEN	OPEN	3
OPEN	OPEN	OPEN	4
OPEN	CLOSE	CLOSE	5
OPEN	OPEN	CLOSE	6
OPEN	CLOSE	OPEN	7
CLOSE	OPEN	CLOSE	8

BOM			
SR.	QNTY.	REF.	DESC
1	1	CN1	SIP8
2	13	U2,CN2,C4,C5,D21,R29,R30,R31,R32,R33,R34,R35,R36	DON'T POPULATE
3	3	C1,C2,C6	0.1uF SMD 0805
4	8	SW1,SW2,SW3,R3,C3,SW4,R7,R8	OMIT
5	20	D1-D20	LED SMD 0805
6	3	J1,J2,J3	PCB SOLDER JUMPER
7	1	PR1	10K TRIM-POT
8	1	R1	100E SMD 0805
9	24	R9-R28	470E SMD 0805
10	1	U1	PIC16F886 SO 28
11	4	R2, R4, R5, R6	10K SMD 0805

