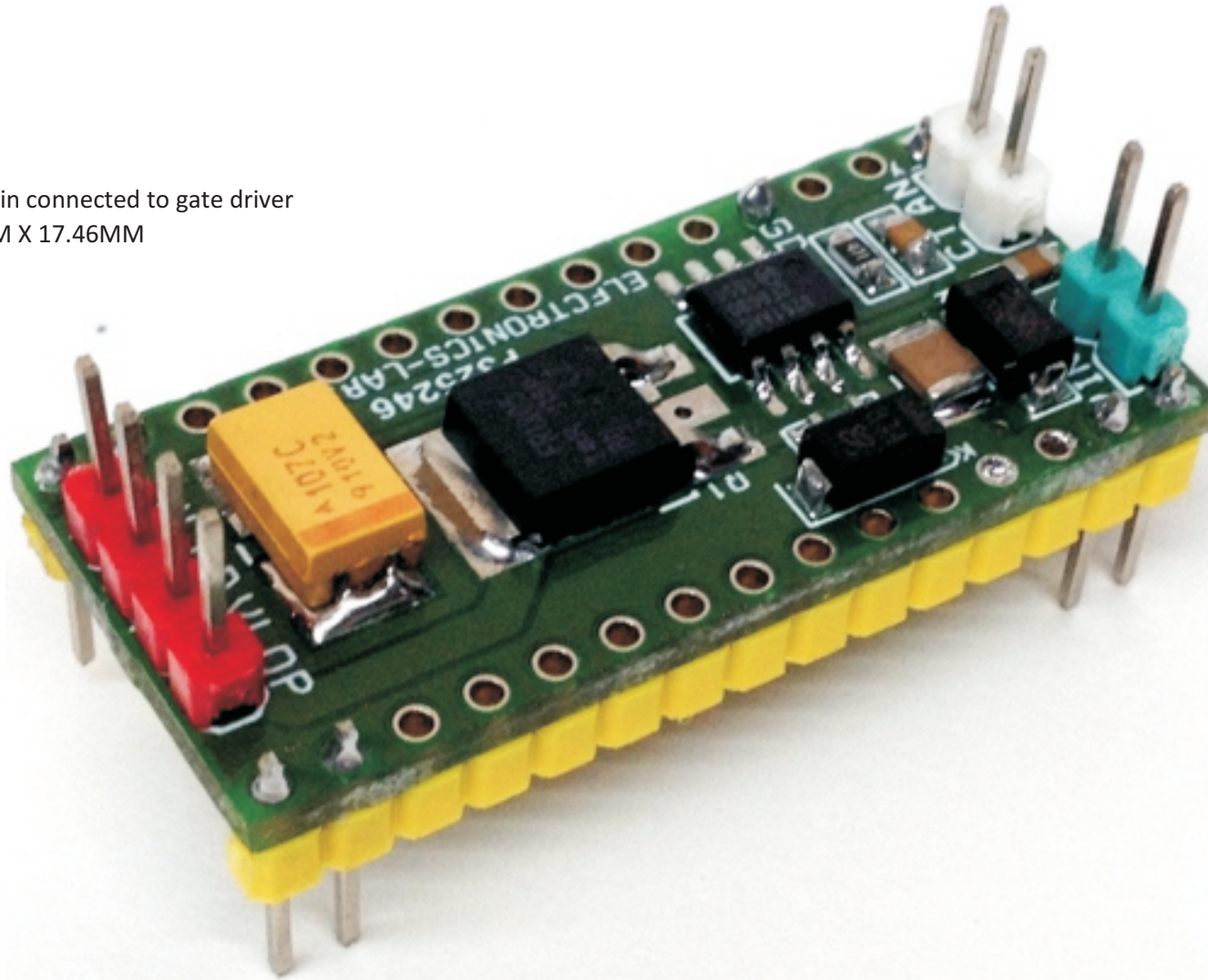


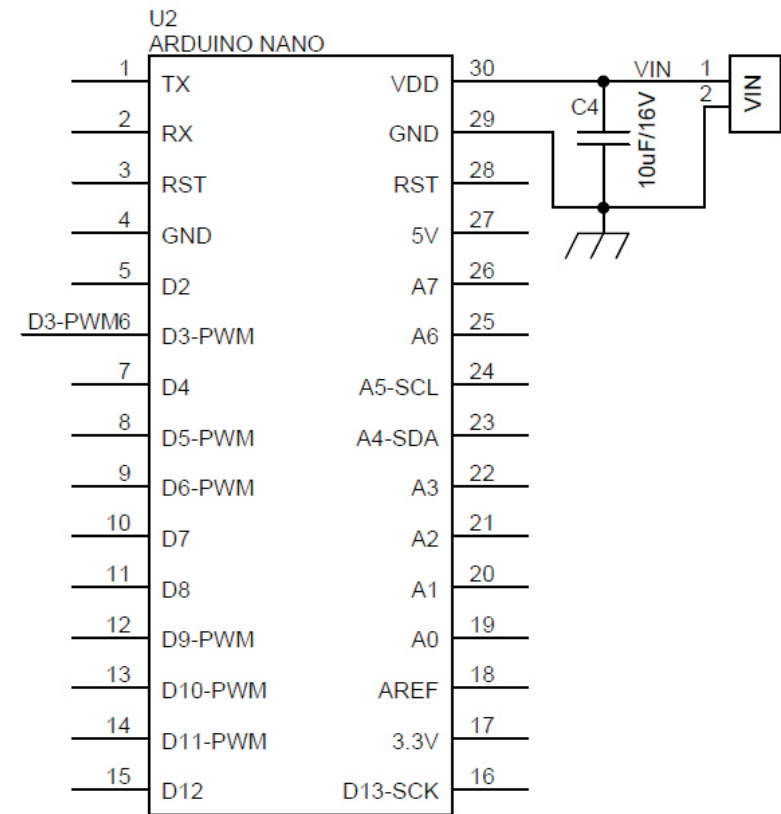
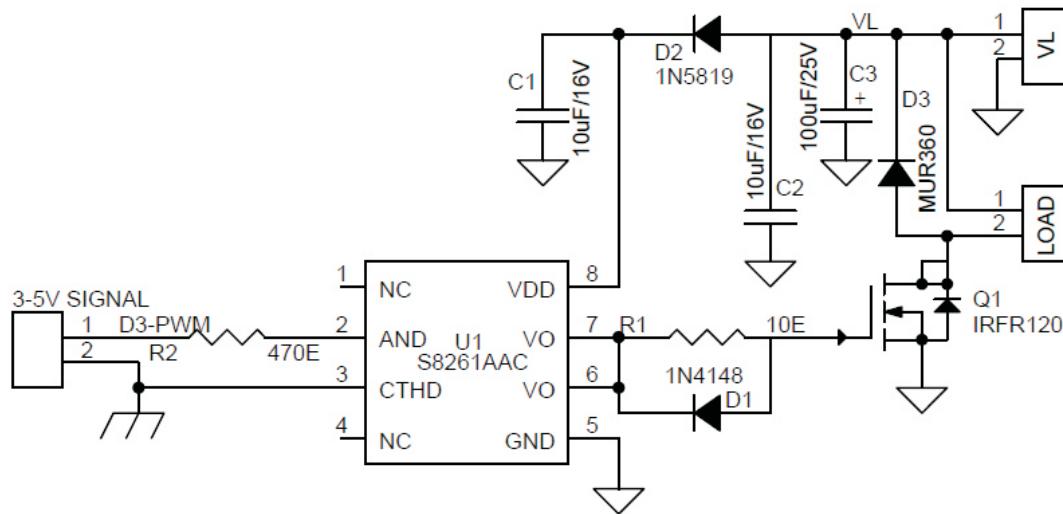
MOSFET and Isolated Gate Driver Based DC Motor and Solenoid Driver Arduino Nano Shield

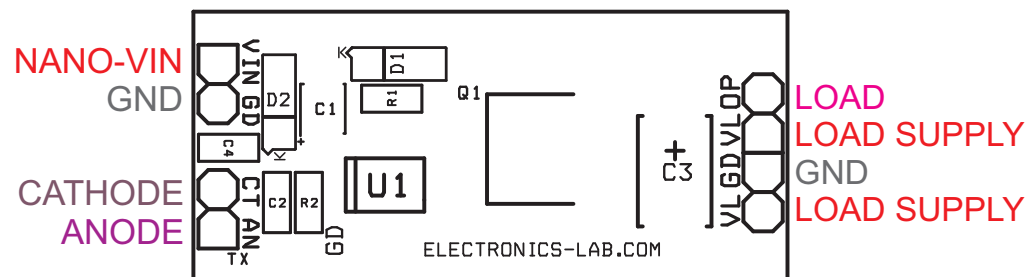
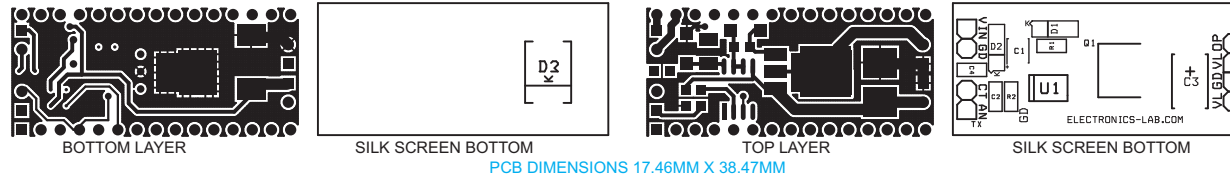
The Isolated gate driver based N channel Mosfet Arduino Nano shield can be used in various applications like DC Motor driver, solenoid driver, led driver, bulb driver and heater driver, 3 amp fast switching diode provided across the load for inductive load which prevent circuit from back EMF, Arduino Nano can be used to generate on/off signal or PWM for speed control. The board also can be used as standalone driver by feeding 3-5V directly to LED of gate driver. Mosfet can handle up to load 3 amps and dc supply 12-24V DC. PWM Pin D3 of Arduino connected to gate driver IC.

Features

- Supply 12-24V DC
- Load Up To 3Amps
- Arduino Nano D3-PWM Pin connected to gate driver
- PCB Dimensions 38.47MM X 17.46MM







BOM			
SR.	QNTY.	REF.	DESC.
1	1	CN2	2 PIN HEADER CONNECTOR
2	1	CN3	2 PIN HEADER CONNECTOR
3	1	CN4	2 PIN HEADER CONNECTOR
4	1	CN5	2 PIN HEADER CONNECTOR
5	3	C1,C2,C4	10uF/16V
6	1	C3	100uF/25V
7	1	D1	1N4148
8	1	D2	1N5819
9	1	D3	MUR360
10	1	Q1	IRFR120
11	1	R1	10E
12	1	R2	470E
13	1	U1	S8261AAC
14	1	U2	ARDUINO NANO