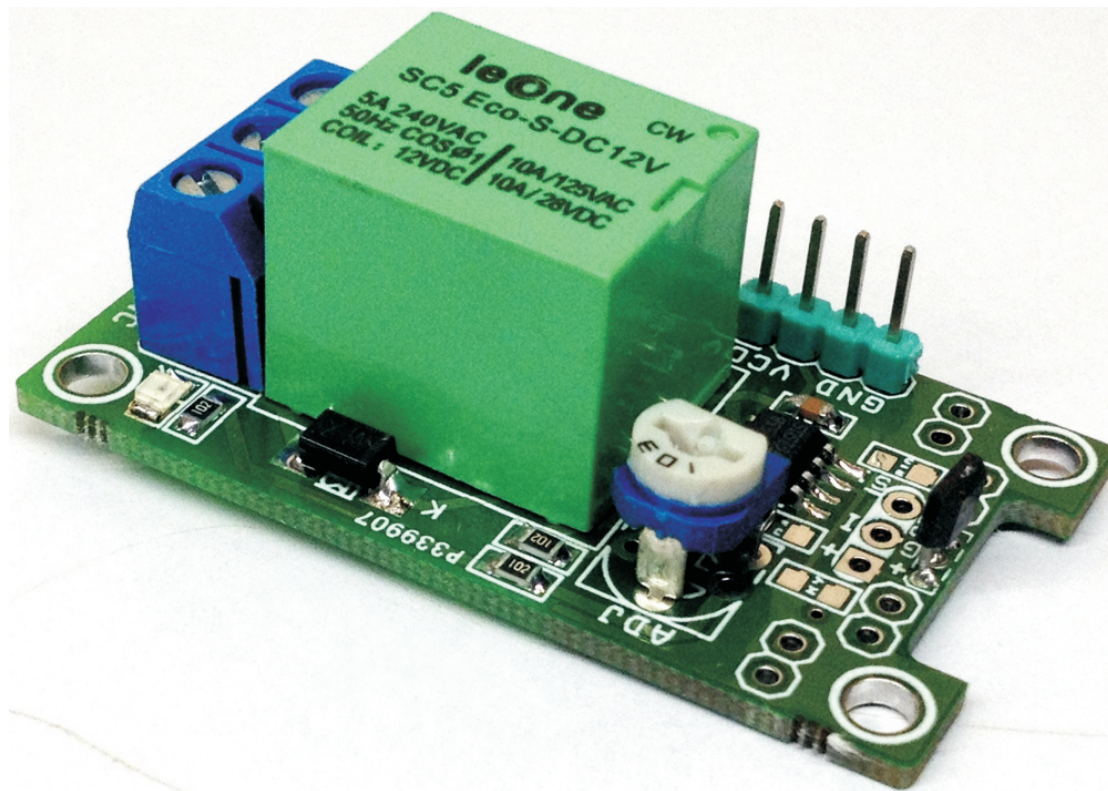


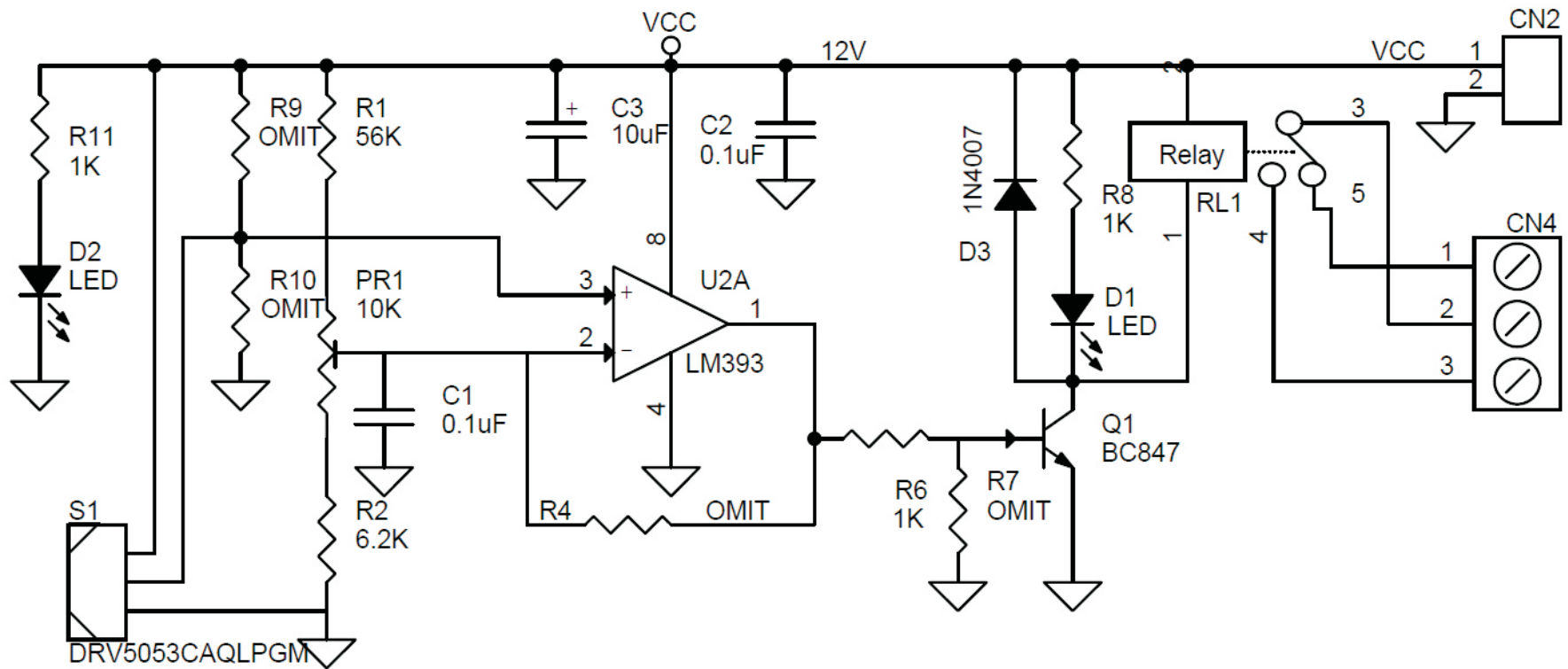
Proximity Distance Sensor

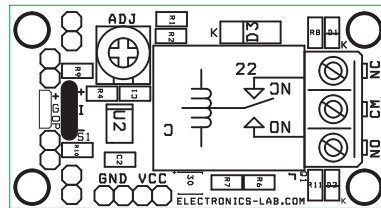
The hall sensor proximity sensor can detect magnetic targets approaching the sensor, without physical contact with the target. This sensor also can be used to detect the distance range 0-4cm (0-40MM), target distance can be adjust using on board trimmer potentiometer. Project built around DRV5053 magnetic field sensor and LM393 comparator. Relay provides normally open and normally closed operations, relay can drive AC and DC load, AC 230V/5Amps and DC 30V/5Amps. Onboard potentiometer helps to adjust the sensing distance. LED D1 indicates sensor operations, LED D2 Power LED.

Features

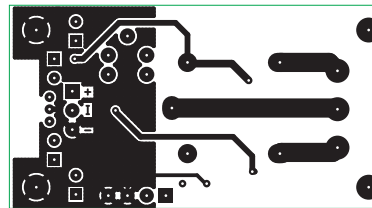
- Supply 12V DC
- Current 60mA (When Relay is on)
- Sensing Distance adjustable 0-40MM
- On Board Power LED
- On board Sensor LED



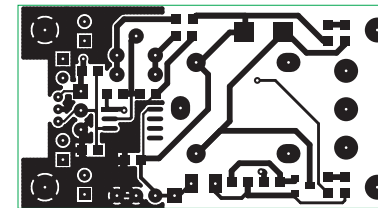




SILK SCREEN TOP



BOTTOM LAYER



TOP LAYER

PCB DIMENSIONS 50.19MM X 27.08MM

BOM			
SR.	QNTY.	REF.	DESC.
1	1	CN2	2 PIN HEADER CONNECTOR
2	1	CN4	3 PIN SCREW TERMINAL
3	2	C1,C2	0.1uF SMD 0805
4	1	C3	10uF SMD 1210
5	2	D1,D2	LED SMD 0805
6	1	D3	1N4007 SMD
7	1	PR1	10K SMD 0805
8	1	Q1	BC847 SMD
9	1	RL1	Relay 12V SUGER CUBE RELAY
10	1	R1	56K SMD 0805
11	1	R2	6.2K SMD 0805
12	4	R4,R7,R9,R10	OMIT
13	3	R6,R8,R11	1K SMD 0805
14	1	S1	DRV5053CAQLPGM
15	1	U2	LM393 SMD SO8