

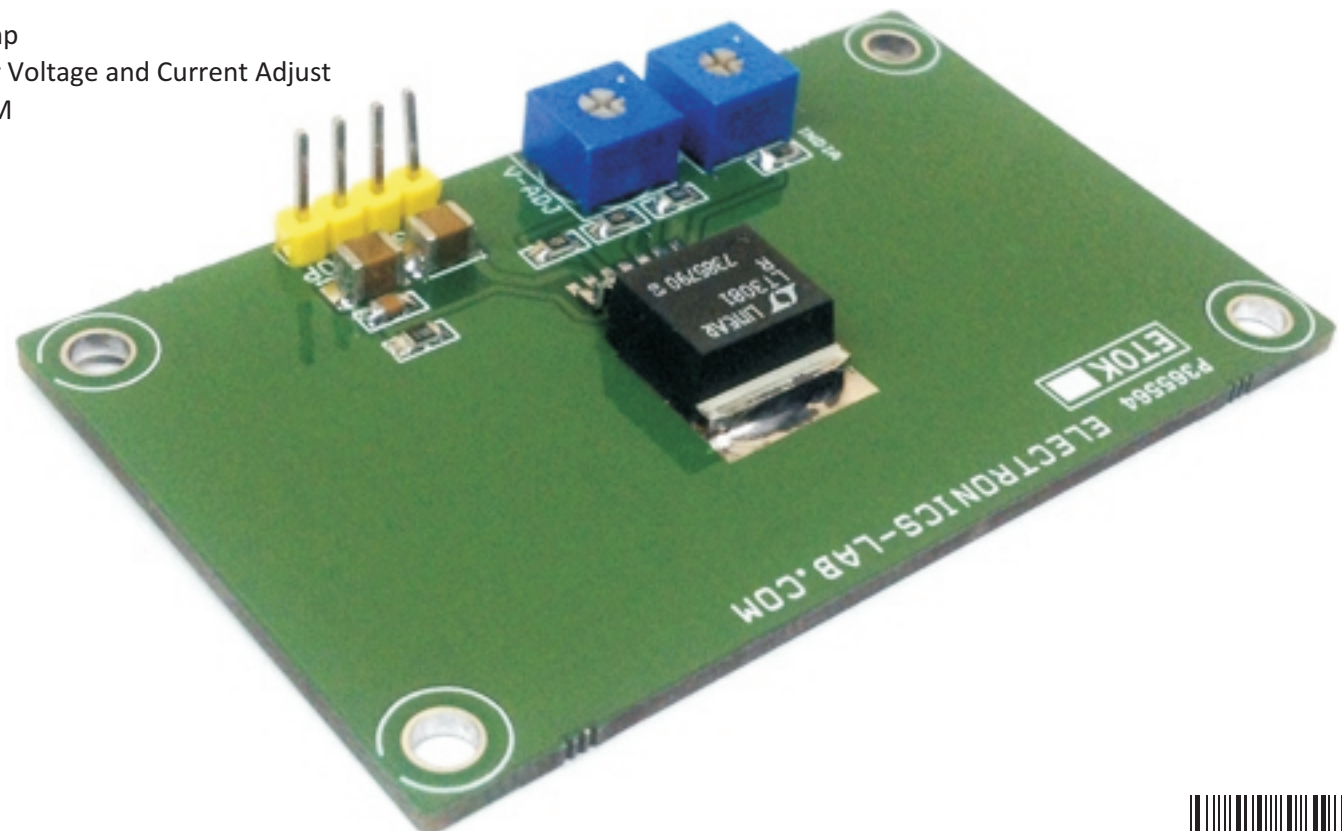
## Adjustable Power Supply With Current Limit

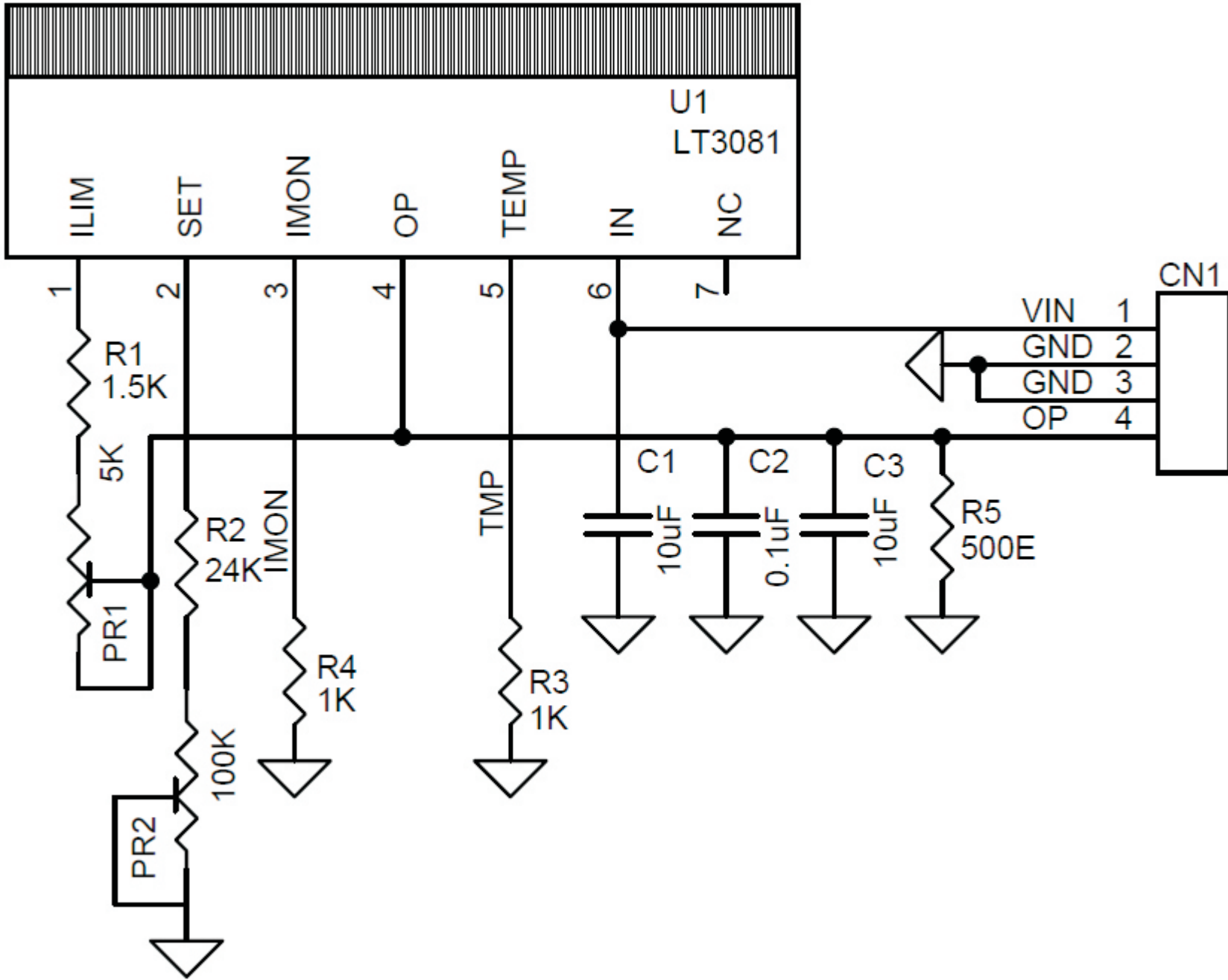
Simple power supply provides adjustable output voltage with adjustable current limit. In such small package, both these features make the power supply unique. Output Voltage adjustable range 1.2V to 6V DC and current limit range adjustable up to 1.5Amp, Input Supply 12V-30V DC.

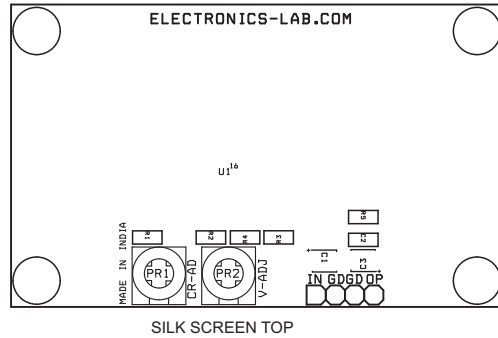
The LT<sup>®</sup>3081 is a 1.5A low dropout linear regulator designed for rugged industrial applications. Key features of the IC are the extended safe operating area (SOA), output current monitor, temperature monitor and programmable current limit. The LT3081 can be paralleled for higher output current or heat spreading. The device withstands reverse input and reverse output-to-input voltages without reverse current flow. The LT3081's precision 50 $\mu$ A reference current source allows a single resistor to program output voltage to any level between zero and 34.5V. The current reference architecture makes load regulation independent of output voltage. The LT3081 is stable with or without input and output capacitors. The output current monitor (IOUT/5000) and die junction temperature output (1 $\mu$ A/ $^{\circ}$ C) provide system monitoring and debug capability. In addition, a single resistor programs current limit.

### Features

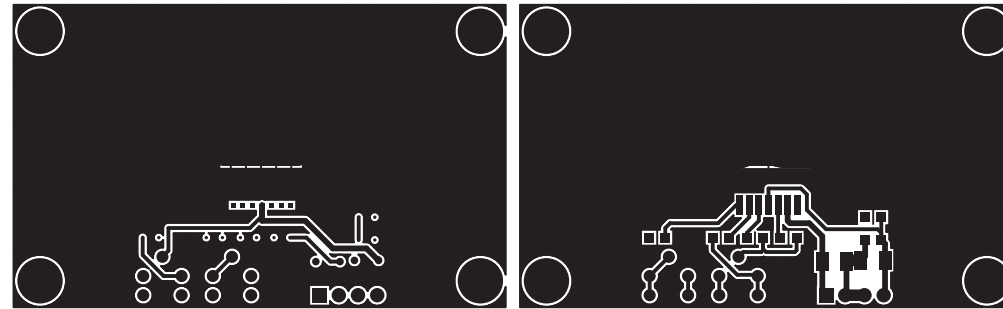
- Supply Input 12V-30V
- Output Supply 1.2V to 6V
- Current Limit Adjustable Up To 1.5Amp
- On Board Trimmer Potentiometer For Voltage and Current Adjust
- PCB Dimensions 65.43MM X 40.22MM







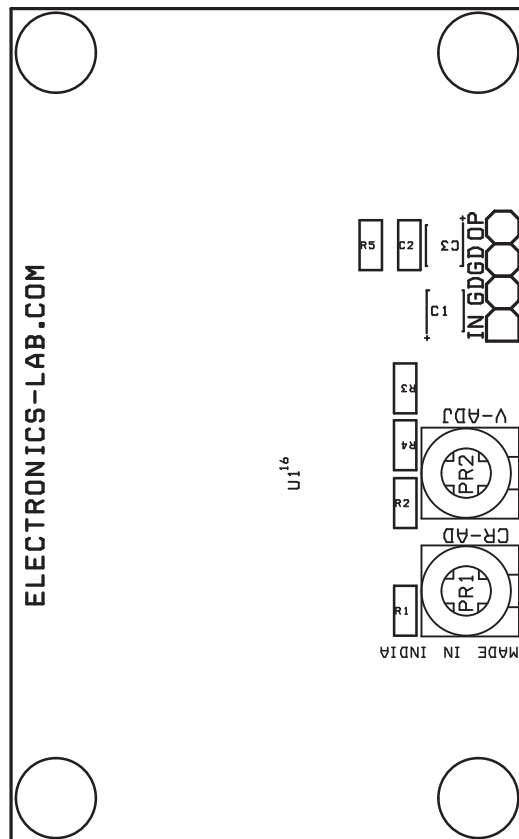
SILK SCREEN TOP



BOTTOM LAYER

TOP LAYER

PCB DIMENSIONS 65.43MM X 40.22MM



BOM			
SR.	QNTY.	REF.	DESC.
1	1	CN1	4 PIN HEADER CONNECTOR
2	2	C1,C3	10uF/50V SMD 1210
3	1	C2	0.1uF SMD 0805
4	1	PR1	5K TRIM-POT
5	1	PR2	100K TRIM-POT
6	1	R1	1.5K SMD 0805
7	1	R2	24K SMD 0805
8	2	R3,R4	1K SMD 0805
9	1	R5	500E SMD 0805
10	1	U1	LT3081 7 PIN PLASTIC DD-PAK