

## Analog Style Mono VU Meter On OLED - Arduino Compatible

This is an analog-style VU meter on a 0.96" OLED Display. The project has a 0.96" OLED display, Atmega328 Microcontroller, 3.5 mm audio EP socket for audio signal input. This Arduino compatible hardware can be program using Arduino IDE. Operating Supply 5V DC.

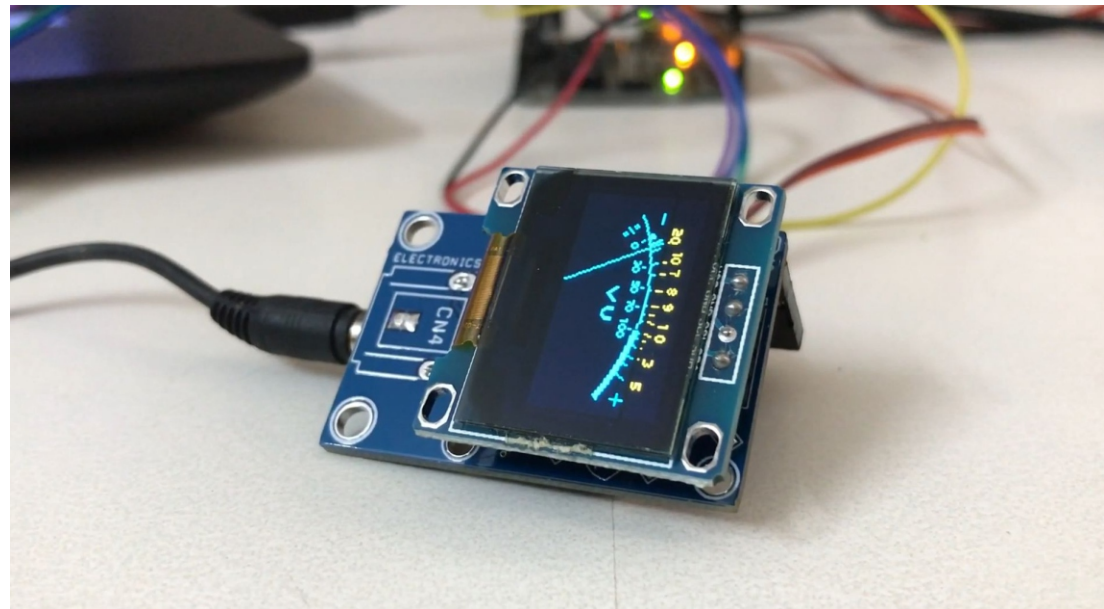
- CN4 or CN3: Audio Signal Input (From Headphone or Audio Signal)
- PR1 Trimmer Potentiometer: Audio Signal Level Adjust
- CN2: Programming Connector
- CN1: OLED Display 0.96 Inch – 4 Pin

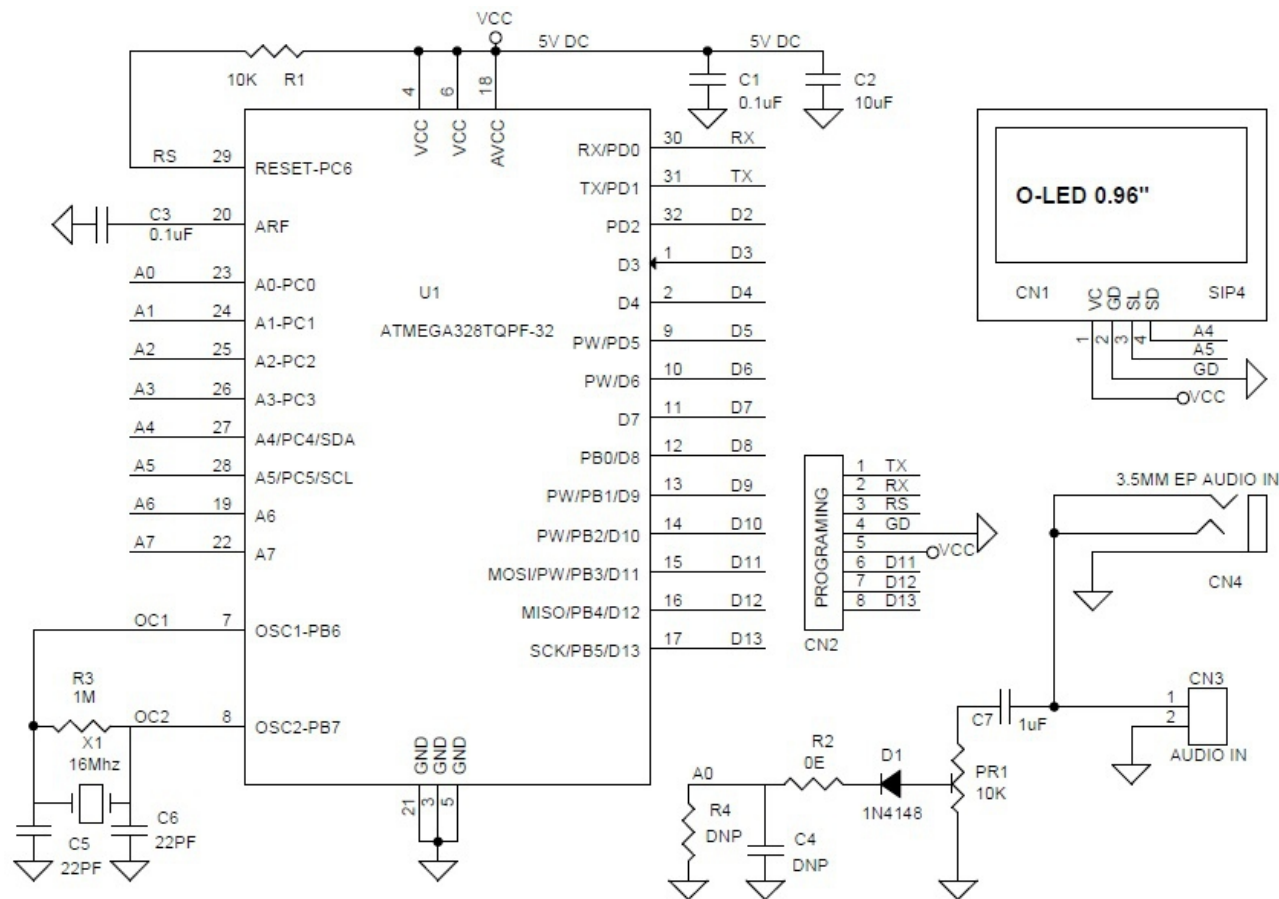
Arduino code is available as a download to test the project. A new ATMEGA328 chip is required to bootloader flashing before programming the microcontroller with Arduino IDE. For more info check the link below:

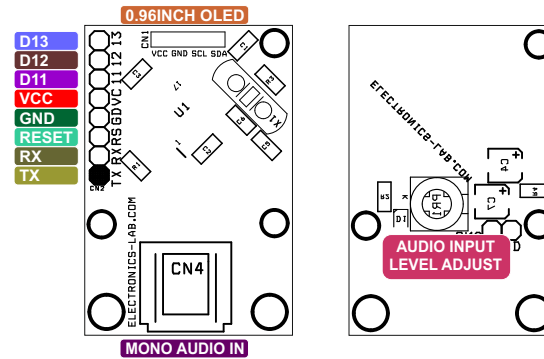
<https://www.arduino.cc/en/Tutorial/BuiltInExamples/ArduinoToBreadboard>

**Credits:** Arduino Code Author Mirko Pavleski

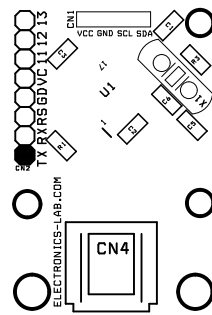
<https://create.arduino.cc/projecthub/mircemk/diy-analog-style-stereo-vu-meter-on-i2c-oled-00aca7>



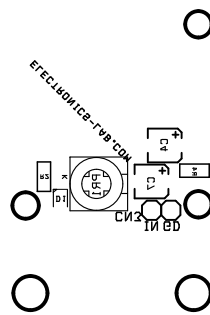




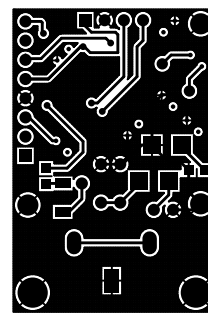
BOM						
NO.	QNTY.	REF.	DESC.	MANUFACTURER	SUPPLIER	SUPPLIER PART NO
1	1	CN1	4 PIN MALE HEADER PITCH 2.54MM	WURTH	DIGIKEY	732-5317-ND
2	1	CN2	8 PIN MALE HEADER PITCH 2.54MM	WURTH	DIGIKEY	732-5321-ND
3	1	CN3	OPTIONAL			
4	1	CN4	3.5MM FEMALE EP SOCKET	CLIFF	Element14	2518188
5	2	C1,C3	0.1uF/50V SMD SIZE 0805	MURATA/YAGEO	DIGIKEY	
6	1	C2	10uF/10V SMD SIZE 0805	MURATA/YAGEO	DIGIKEY	
7	2	C5,C6	22PF/50V SMD SIZE 0805	MURATA/YAGEO	DIGIKEY	
8	1	C7	10uF/16V SMD SIZE 1210 OR 1206	MURATA/YAGEO	DIGIKEY	
9	1	D1	1N4148	MICROCHIP TECH	DIGIKEY	1086-15170-ND
10	1	PR1	10K TRIMMER POT	NIDEC COPAL	DIGIKEY	CT6EP103-ND
11	1	R2	0E SMD SIZE 0805	MURATA/YAGEO	DIGIKEY	
12	1	R3	1M 5% SMD SIZE 0805	MURATA/YAGEO	DIGIKEY	
13	2	R4,C4	DNI		DIGIKEY	DO NOT INSTALL
14	1	U1	ATMEGA328TQPF-32	MICROCHIP	DIGIKEY	ATMEGA328PB-AURCT-ND
15	1	X1	16Mhz	ECS INC	DIGIKEY	X1103-ND
16	1	R1	10K 5% SMD SIZE 0805	MURATA/YAGEO	DIGIKEY	
17	1	OLED	BLUE 0.96" OLED Display I <sup>2</sup> C 4-PIN		ALIEXPRESS	



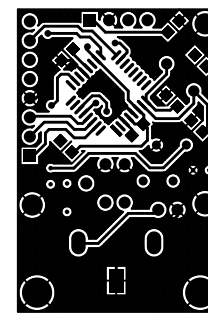
SILK SCREEN TOP



SILK SCREEN BOTTOM



BOTTOM LAYER



TOP LAYER

**PCB DIMENSIONS 40.48MM X 27.31MM**

