

5

4

3

2

1

D

D

C

C

B

B

A

A

5

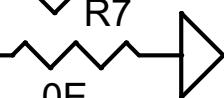
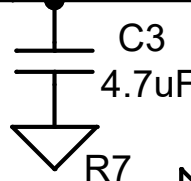
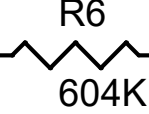
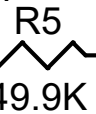
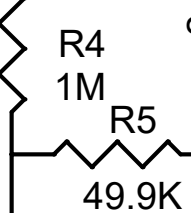
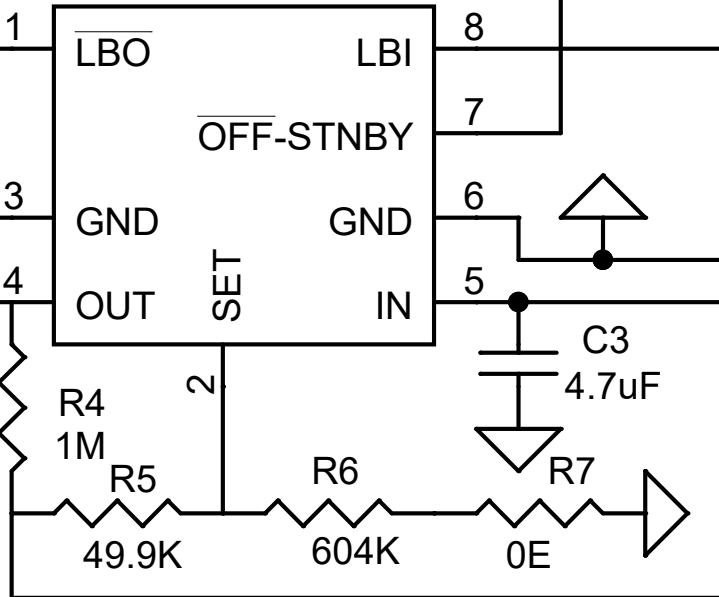
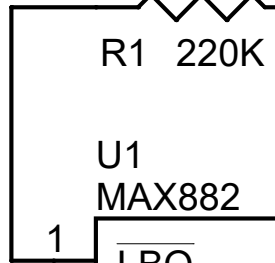
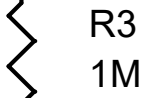
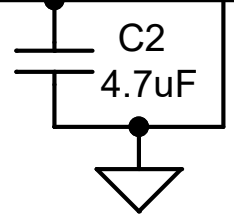
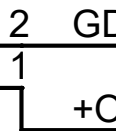
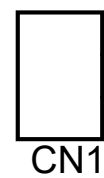
4

3

2

1

SIP2



R1 220K

C1 1uF

R2 1K

U1 MAX882

R3 1M

GD

+O

CN1

C2 4.7uF

R4 1M

R5 49.9K

R6 604K

R7 0E

C3 4.7uF

4PIN SW1

GD

+IN

CN2

BATTERY

1

8

LBI

7

LBO

OFF-STNBY

GND

GND

OUT

SET

IN

6

5

1

2