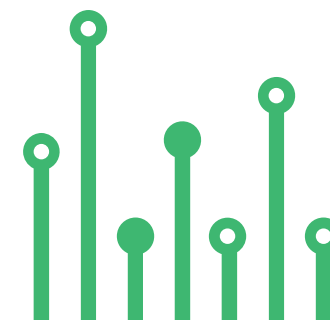


THE  
**electronics-lab**  
.com  
from ideas to  
**boards**

[electronics-lab - Projects](#) | [Embedded News](#) | [Online Community](#) | [e-Shop](#)

Open Source Hardware Electronics Projects

[electronics-lab.com/projects](https://electronics-lab.com/projects)





# Isolated Voltage- Measurement With $\pm 1V$ Input and Differential Output with Integrated DC/DC Converter



SKU: EL130694

# Isolated Voltage-Measurement With $\pm 1\text{V}$ Input and Differential Output with Integrated DC/DC Converter



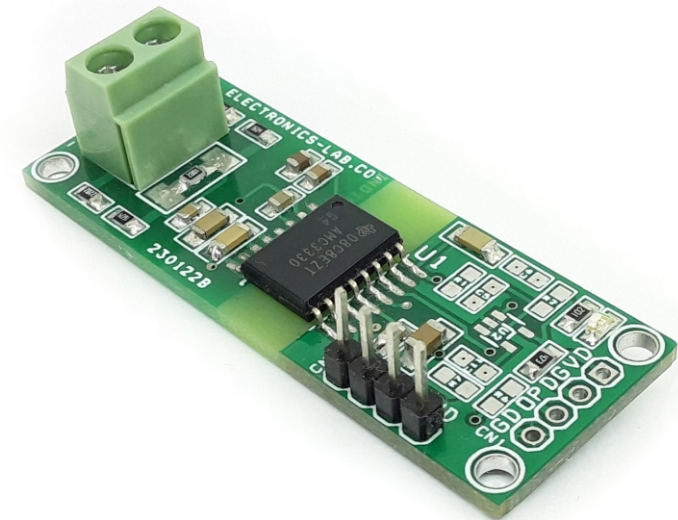
This project can be used in bidirectional high-voltage measurements. The output is fully isolated from the input side and can be used for applications such as high-voltage DC-DC converters, High-Voltage EV chargers, SMPS, 3 Phase motor drivers, inverters, etc. The board is built using the AMC3330 chip. The chip is a precision, isolated amplifier with a fully integrated, isolated DC/DC converter that allows single-supply operation from the low side of the device. The reinforced capacitive isolation barrier is certified according to VDE V 0884-11 and UL1577 and separates sections of the system that operate on different common-mode voltage levels and protect low-voltage domains from damage.



**Note 1:** Do not leave the analog inputs INP and INN of the project unconnected (floating) when the device is powered up on the high-side. If the device input is left floating, the bias current may generate a negative input voltage that exceeds the specified input voltage range

## Features

- Power Supply Input 5V DC (Range 3.3V to 5V)
- $\pm 1\text{-V}$  input voltage range optimized for voltage measurements with a high input impedance
- Fixed gain: 2.0
- 6000-VPK reinforced isolation
- Low DC errors: – Gain error:  $\pm 0.2\%$  (max) – Gain drift:  $\pm 45$  ppm/ $^{\circ}\text{C}$  (max) – Offset error:  $\pm 0.3$  mV (max) – Offset drift:  $\pm 4$   $\mu\text{V}/^{\circ}\text{C}$  (max) – Nonlinearity:  $\pm 0.02\%$  (max)
- Common Mode Output 1.44V (Voltage Output at zero 1.44V)
- Clipping Differential Output Voltage  $\pm 2.49\text{V}$  ( $V_{\text{OUT}} = (V_{\text{OUTP}} - V_{\text{OUTN}})$ ;  $|V_{\text{IN}}| = |V_{\text{INP}} - V_{\text{INN}}| > V_{\text{Clipping}}$ )
- Output Short-circuit Current 14mA
- PCB Dimensions 53.98 x 19.69mm



The circuit senses high voltage in the range from -1V to 1V across resistor dividers R11, R4, R5, R8, and R12 and provides differential analog output Out-P and Out-N. The integrated isolated DC/DC converter allows the measurement of non-ground-referenced signals.

The board offers a differential analog output comprised of OUTP and OUTN pins. For differential input voltages ( $V_{INP} - V_{INN}$ ) in the range from -1 V to 1 V, the device provides a linear response with a nominal gain of 2. For example, for a differential input voltage of 1 V, the differential output voltage ( $V_{OUTP} - V_{OUTN}$ ) is 2 V. At zero input (INP shorted to INN), both pins output the same voltage,  $V_{CMout}$ . For absolute differential input voltages greater than 1.0 V but less than 1.25 V, the differential output voltage continues to increase in magnitude but with reduced linearity performance.



**Note 2:** It is advisable to use 1% tolerance for divider/voltage sense resistors.

## Voltage Range and Divider Resistor Calculation

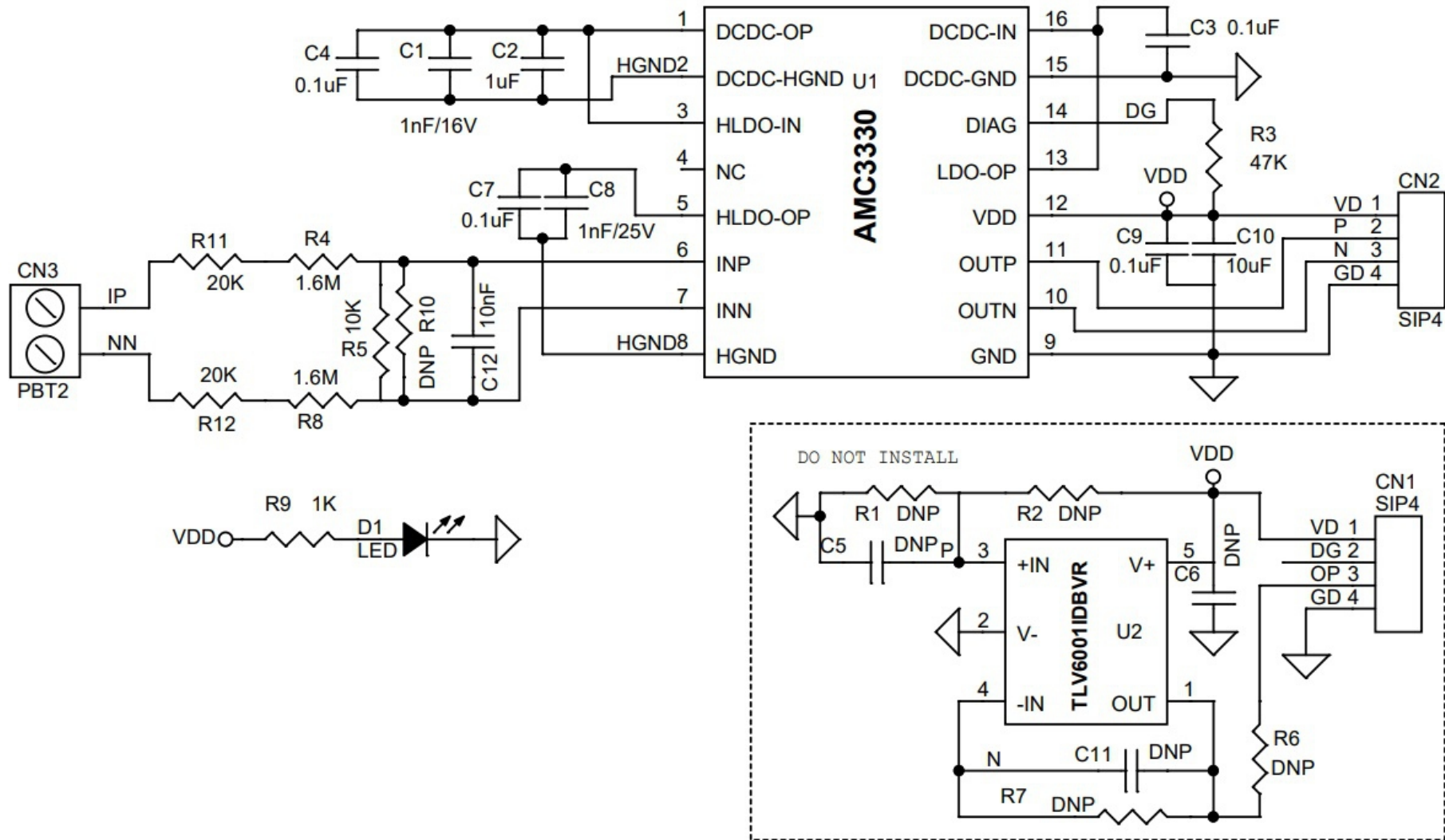
The project is optimized for 230V AC measurements, thus it can be modified for higher or lower voltage measurement range by altering the value of divider resistors R11, R4, R5, R8, R12. Current through resistor divider is 100uA, resulting in voltage drop on sense resistor  $R5 = 1V$ .

- For 230V-RMS Line Voltage (Peak Voltage 325V)  $R11=20K + R4=1.6M$ ,  $R5 = 10K$ ,  $R12 = 20K + R8=1.6M$  Tolerance 1%
- For 120V-RMS Line Voltage (Peak Voltage 170V)  $R11=25K + R4=820K$ ,  $R5 = 10K$ ,  $R12 = 25K + R8=820K$  Tolerance 1%

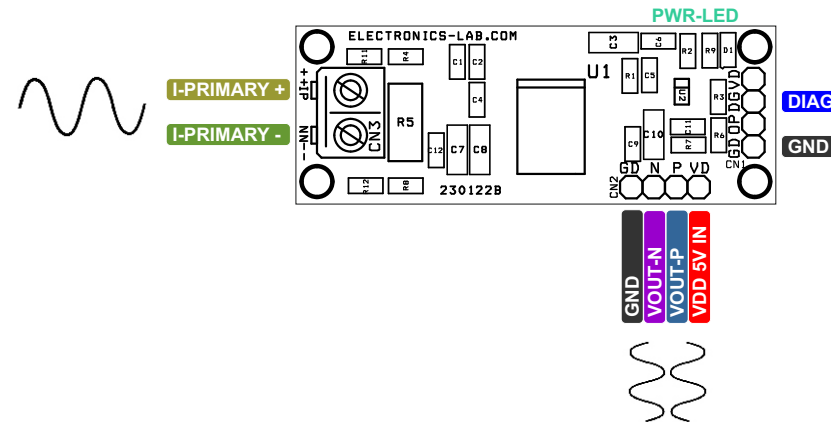
## Connections and Other Important Details

- CN1: Pin 1 = DIAG, PIN 2 = No Use, Pin 3 = Op, Pin 4 = GND
- CN2: Pin 1 = VDD 5V DC In, Pin 2 = Output-P, Pin 3 = Output-N, Pin 4 = GND
- CN3: Pin 1 = Primary Input +P, Pin 2 = Primary Input -N
- D1: Power LED

# Schematic



# Connections

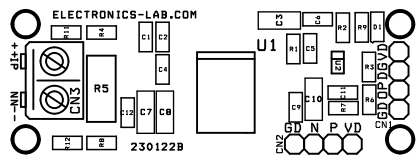
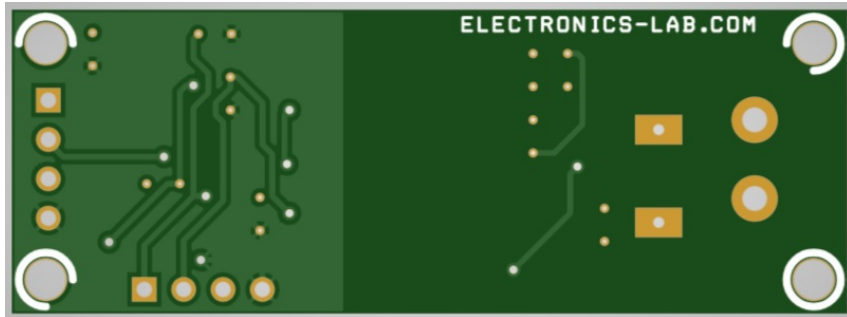
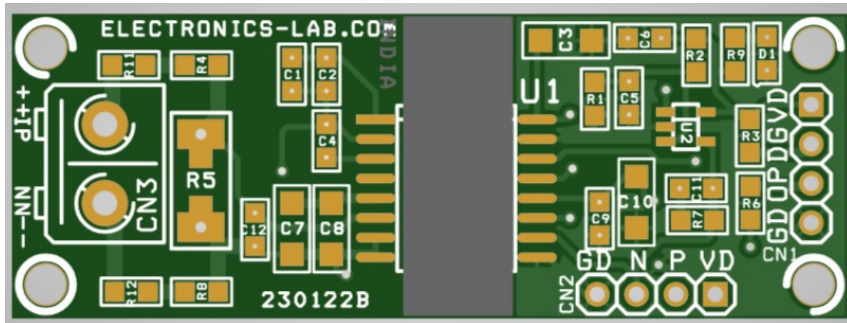


## Diagnostic Output and Fail-Safe Behaviour

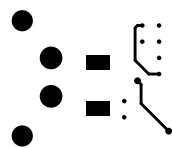
The open-drain DIAG pin can be monitored to confirm the device is operational, and that the output voltage is valid. During power-up, the DIAG pin is actively held low until the high-side supply is in regulation and the device operates properly. The DIAG pin is actively pulled low if:

- The low-side does not receive data from the high-side (for example, because of a loss of power on the high side). The amplifier outputs are driven to negative full-scale.
- The high-side DC/DC output voltage (DCDC\_OUT) or the high-side LDO output voltage (HLDO\_OUT) drop below their respective undervoltage detection thresholds VDCDCUV and VHLDOUTV as specified in the Electrical Characteristics table. In this case, the low-side may still receive data from the high-side but the data may not be valid. The amplifier outputs are driven to negative full-scale. During normal operation, the DIAG pin is in a high-impedance state. Connect the DIAG pin to a pull-up supply through a resistor or leave open if not used.

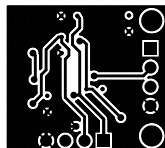
# PCB



SILK SCREEN TOP



BOTTOM LAYER



TOP LAYER

PCB DIMENSIONS 53.98MM X 19.69MM



# Parts List

---

BOM						
NO	QNTY.	REF	DESC.	MANUFACTURER	SUPPLIER	SUPPLIER PART NO
1	2	CN1,CN2	4 PIN MALE HEADER PITCH 2.54MM	WURTH	DIGIKEY	732-5317-ND
2	1	CN3	2 PIN SCREW TERMINAL PITCH 5.08MM	PHOENIX	DIGIKEY	277-1247-ND
3	1	C1	1nF/16V CERAMIC SMD SIZE 0805	YAGEO/MURATA	DIGIKEY	
4	1	C2	1uF/25V CERAMIC SMD SIZE 0805	YAGEO/MURATA	DIGIKEY	
5	2	C4,C9	0.1uF/50V CERAMIC SMD SIZE 0805	YAGEO/MURATA	DIGIKEY	
6	8	R1,R2,C5,R6,C6,R7,R10,C11	DNP			DO NOT INSTALL
7	2	C3,C7	0.1uF/50V CERAMIC SMD SIZE 1206	YAGEO/MURATA	DIGIKEY	
8	1	C8	1nF/25V CERAMIC SMD SIZE 1206	YAGEO/MURATA	DIGIKEY	
9	1	C10	10uF/25V SMD SIZE 1206	YAGEO/MURATA	DIGIKEY	
10	1	C12	10nF/50V SMD SIZE 0805	YAGEO/MURATA	DIGIKEY	
11	1	D1	LED RED SMD SIZE 0805	OSRAM	DIGIKEY	475-1278-1-ND
12	1	R3	47K 5% SMD SIZE 0805	YAGEO/MURATA	DIGIKEY	
13	2	R4,R8	1.6M 1% SMD SIZE 0805	YAGEO/MURATA	DIGIKEY	
14	1	R5	10K 1% SMD SIZE 1206 OR 2512	YAGEO/MURATA	DIGIKEY	
15	1	R9	1K 5% SMD SIZE 0805	YAGEO/MURATA	DIGIKEY	
16	2	R11,R12	20K 1% SMD SIZE 0805	YAGEO/MURATA	DIGIKEY	
17	1	U1	AMC3330	TI	DIGIKEY	296-AMC3330QDWERQ1TR-ND
18	1	U2	TLV6001DBVR	TI		DO NOT INSTALL



# Notes

---

---

---

---

---

---

---

---

---

---

---

---

---

---

---

---

---

---

---

---

---

---

---

---

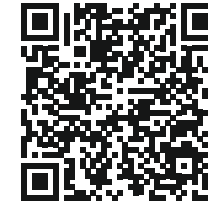


## APP



### Android App

DOWNLOAD



---

Android App launched in 2017 and has 50k+ downloads - rated with 4.5 stars.

SCAN QR CODE



Keep  
In touch..

**electronics-lab**  
.com

info@electronics-lab.com  
www.electronics-lab.com

from ideas to **boards**

