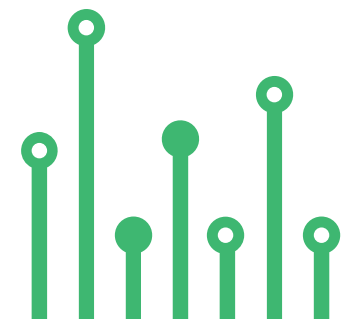


THE
electronics-lab
.com
from ideas to
boards

[electronics-lab - Projects](#) | [Embedded News](#) | [Online Community](#) | [e-Shop](#)

Open Source Hardware Electronics Projects

[electronics-lab.com /projects](https://electronics-lab.com/projects)





POWER SUPPLY



Step up DC-DC Converter 12V Output, 5V Input



SKU: EL134940

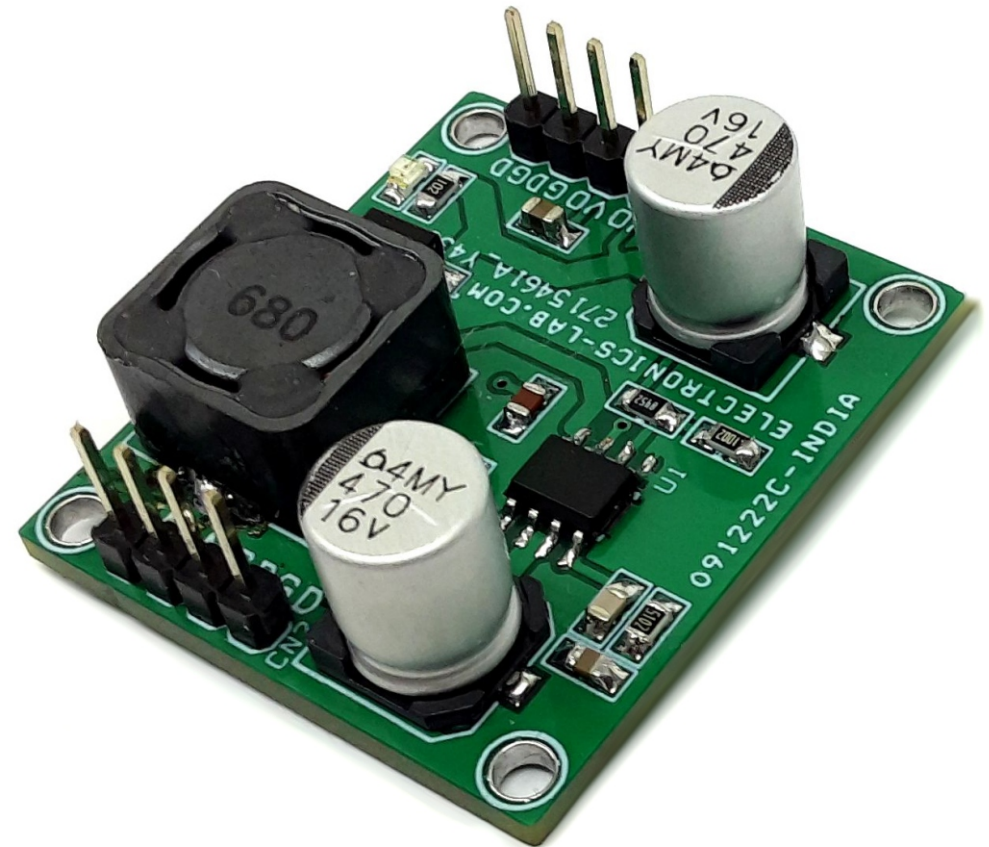
Step up DC-DC Converter 12V Output, 5V Input



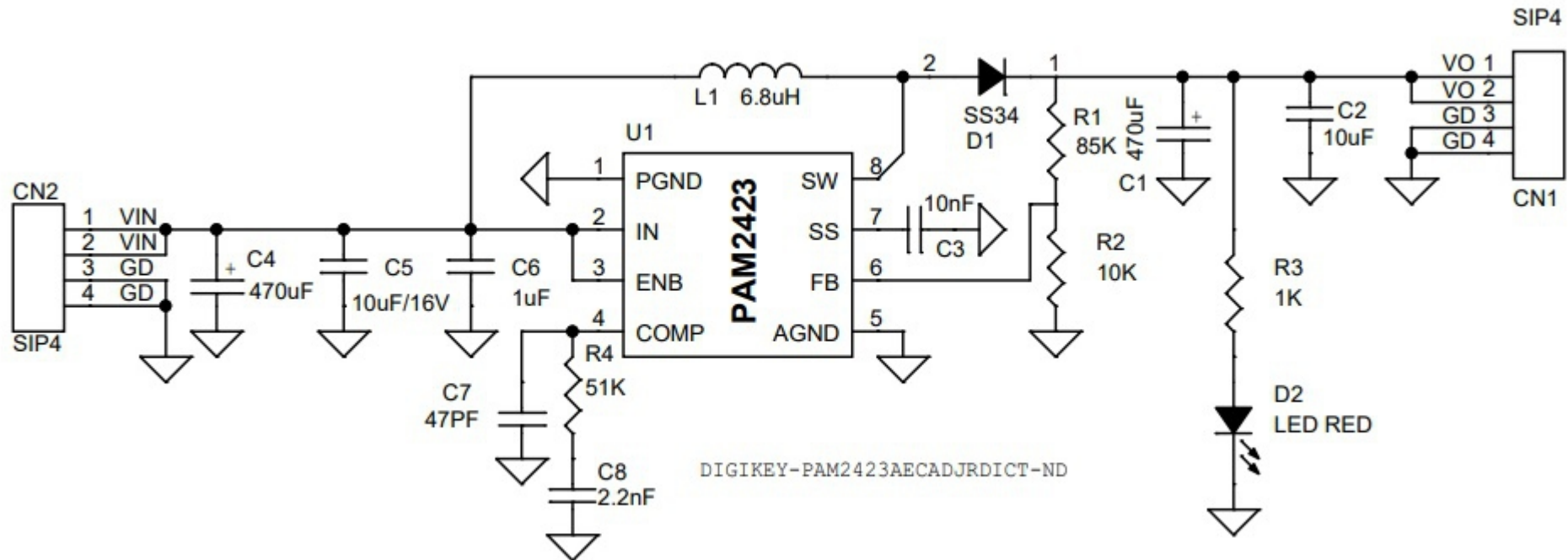
This high-performance, fixed frequency, current-mode PWM step-up DC/DC converter efficiently produces 12V from input voltages between 3.6V to 5.5V. The project is built using the PAM2423 chip, which includes an integrated power MOSFET that supports a peak current of up to 5.5A. The IC utilizes simple external loop compensation allowing optimization between component size, cost, and AC performance across a wide range of applications. Additional functions include an externally programmable soft-start function for easy inrush current control, internal over-voltage protection (OVP), cycle-by-cycle current limit protection, under-voltage lock-out, and thermal shutdown.

Features

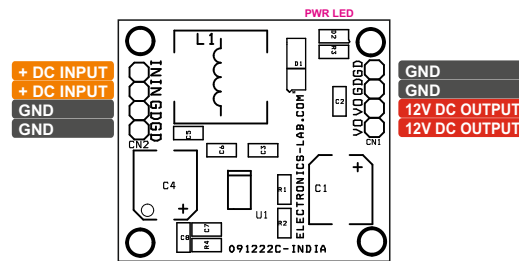
- Input Supply 5V DC (Range 3.6V to 5.5V)
- Output 12V DC
- Load Current Up to 500mA
- Output Power LED
- PCB Dimensions 35.08 X 31.12MM
- Efficiency Up to 90%
- Operating Frequency 520Khz
- Soft-Start Function
- Built-in Over-Voltage Protection (OVP)
- Under-Voltage-Lockout
- Under Voltage Lockout Threshold 2.5V, Hysteresis 200mV
- Over-Current Protection – Threshold 5.5A
- Thermal Shutdowns – Threshold 150 Degree Cent.
- 4 X 2.5MM Mounting Holes
- PCB Dimensions 35.08 X 31.12MM



Schematic



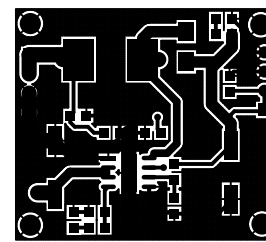
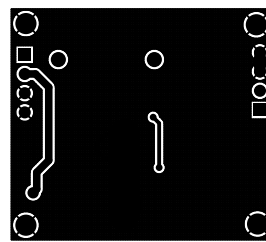
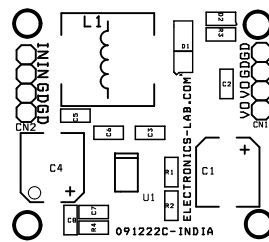
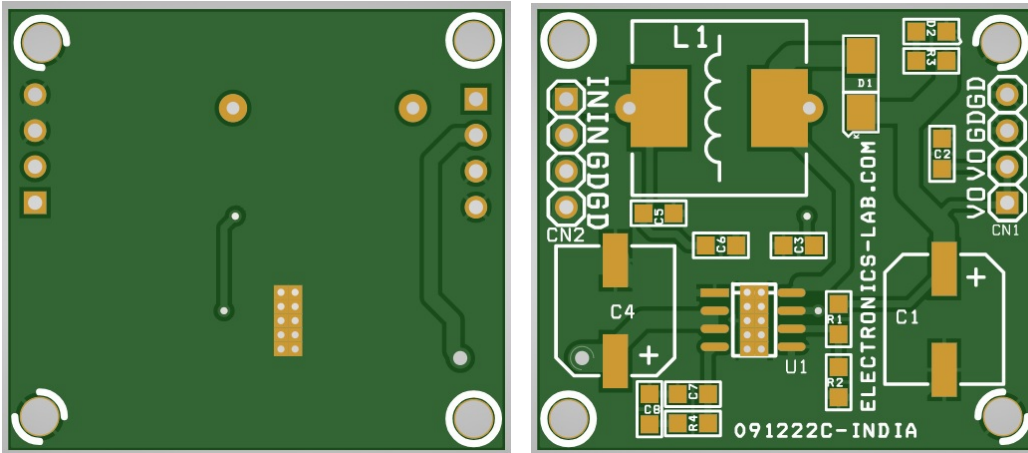
Connections



Connections and Other Details

- CN1: Pin 1 & 2 = V-Output 12V DC, Pin 3 & 4 = GND
- CN2: Pin 1 & 2 = V-Input 5V DC, Pin 3 & 4 = GND
- D2: Output LED

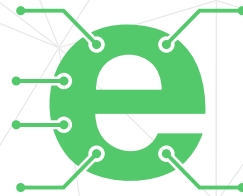
PCB



PCB DIMENSIONS 35.08 X 31.12MM

Parts List

BOM					
NO.	QNTY.	REF.	DESC.	MANUFACTURER	SUPPLIER
1	1	CN1	2 PIN SCREW TERMINAL PITCH 5.08MM	PHOENIX	DIGIKEY
2	1	CN2	4 PIN MALE HEADER PITCH 2.54MM	WURTH	DIGIKEY
3	1	CN3	2 PIN SCREW TERMINAL PITCH 5.08MM	PHOENIX	DIGIKEY
4	1	C1	47uF/63V ELECTROLYTIC	ILLINOIS CAPACITOR	DIGIKEY
5	1	C2	1uF/63V CERAMIC SMD SIZE 1206	MURATA/YAGEO	DIGIKEY
6	1	C3	0.1uF/50V CERAMIC SMD SIZE 0805	MURATA/YAGEO	DIGIKEY
7	3	C4,C5,C6	10uF/63V CERAMIC SMD SIZE 1210	MURATA/YAGEO	DIGIKEY
8	1	D1	RED LED SMD SIZE 0805	LITE ON INC	DIGIKEY
9	1	D2	RED LED SMD SIZE 0805	LITE ON INC	DIGIKEY
10	1	D3	GREEN LED SMD SIZE 0805	DIALIGHT	DIGIKEY
11	1	PR1	5K OR 10K TRIMMER POT	BOURNS	DIGIKEY
12	3	R1,R2,R3	4.7K 5% SMD SIZE 0805	MURATA/YAGEO	DIGIKEY
13	1	R4	0.2E/2W 1% SMD SIZE 2512	MURATA/YAGEO	DIGIKEY
14	1	U1	DRV8251	TI	DIGIKEY



Keep
In touch..

electronics-lab
.com

info@electronics-lab.com
www.electronics-lab.com

from ideas to **boards**

